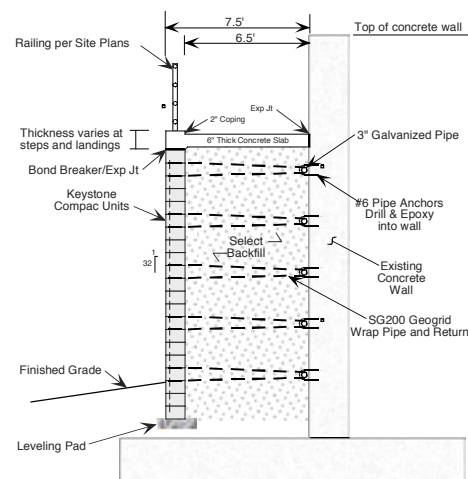
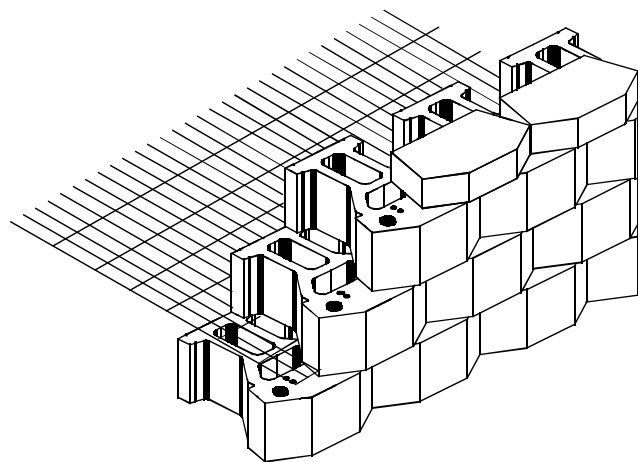
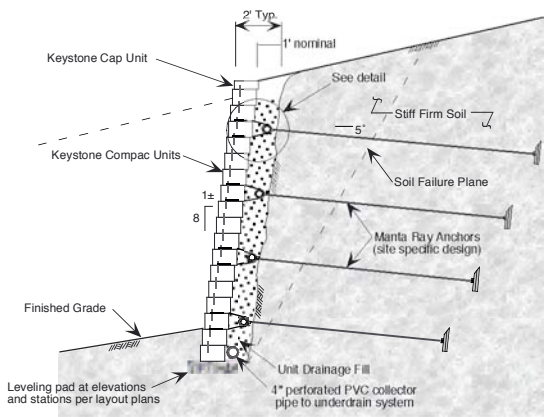
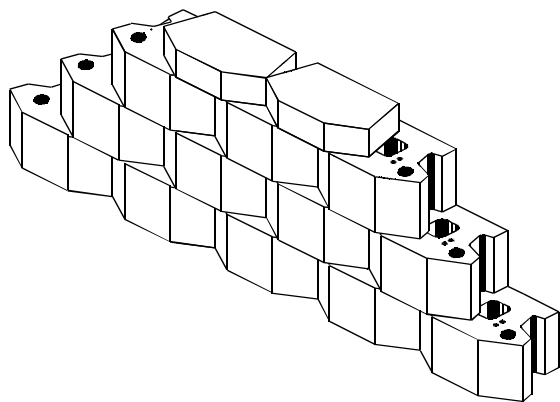


Specialty Applications for Keystone Walls



SHEET INDEX	
Title Sheet	Sheet 1
Soil Nail Facing	Sheet 2
Rock/Shotcrete Facing	Sheet 3
Manta Ray Anchor Wall	Sheet 4
H-Pile Wall Facing	Sheet 5
Sheet Pile Wall Facing	Sheet 6
Concrete Wall Stairway	Sheet 7
Interlocking Gravity Wall	Sheet 8
Geofoam Wall Construction	Sheet 9
Foundation Obstruction	Sheet 10
Slip Joint Installation	Sheet 11
In-situ Slip Joint	Sheet 12



COPYRIGHT (c) 2000 by Keystone Retaining Wall Systems, Inc.

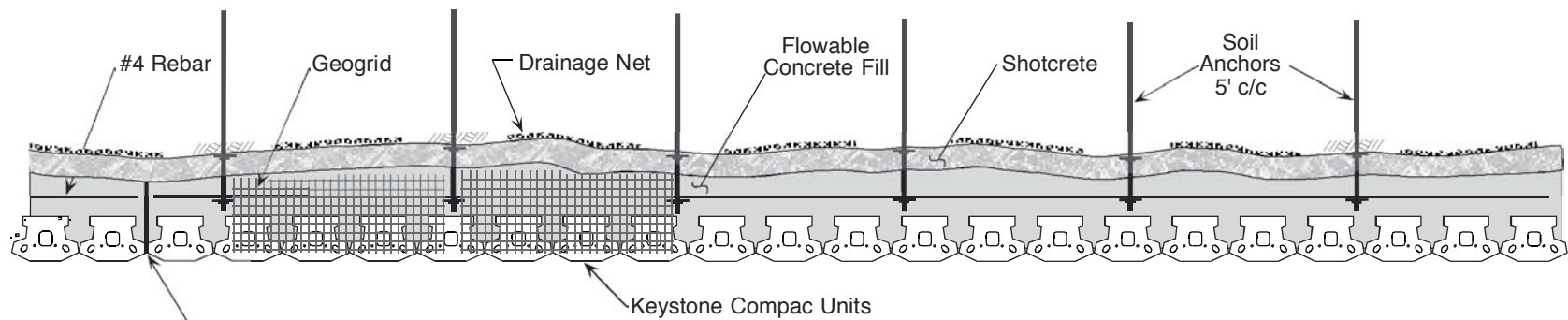
The information contained herein has been compiled by Keystone Retaining Wall Systems and to the best of our knowledge, accurately represents the Keystone product use in the applications which are illustrated. This drawing is being furnished for design guidance and estimating only. Final determination of the suitability for the use contemplated and its manner of use are the sole responsibility of the user. Structural and geotechnical design analysis shall be performed by a qualified engineer.

Any party accepting this document does so in confidence and agrees that it shall not be duplicated in whole or in part, nor disclosed to others without the consent of Keystone Retaining Wall Systems, Inc.

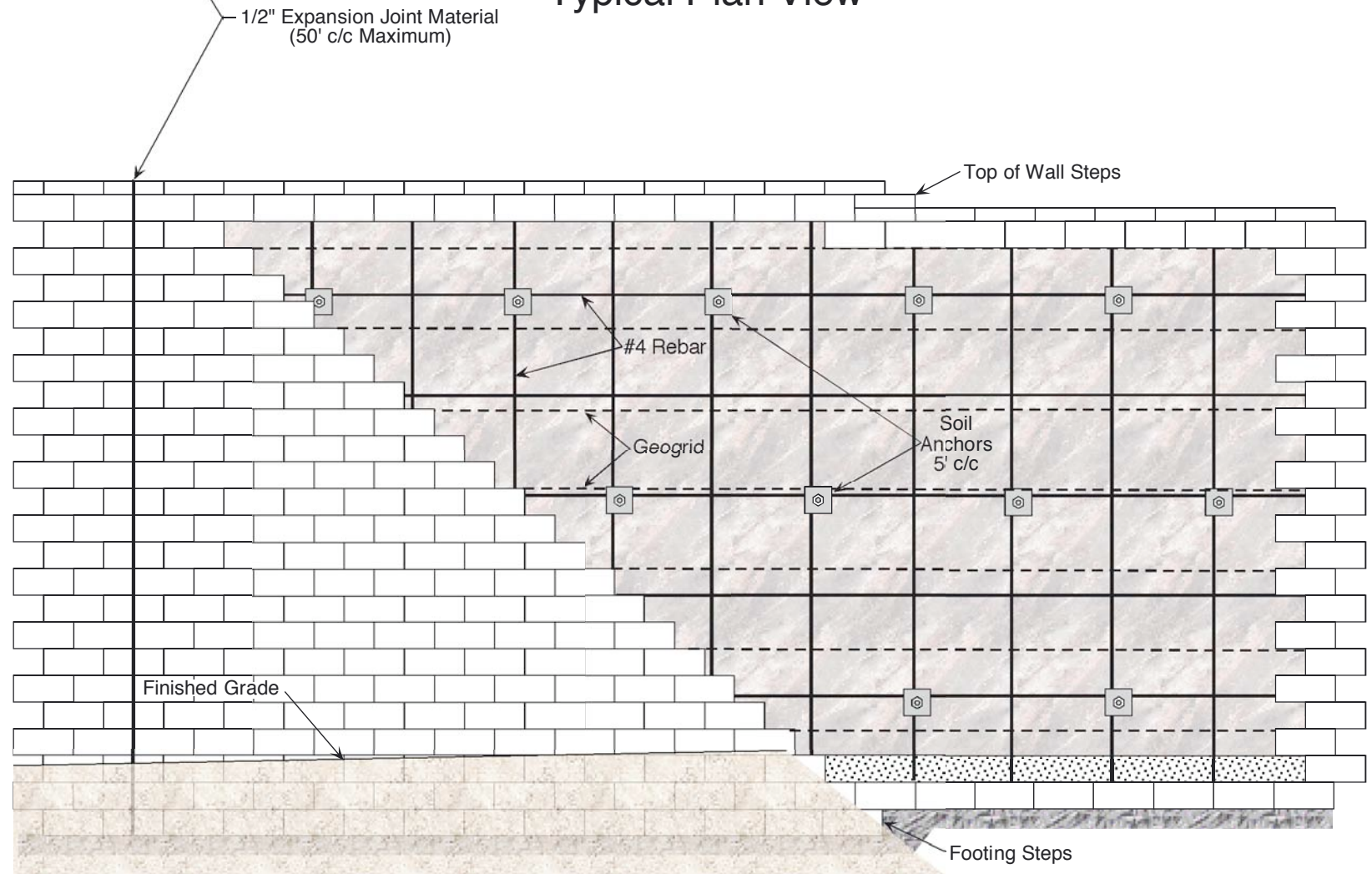
No.	Date	Revision	By



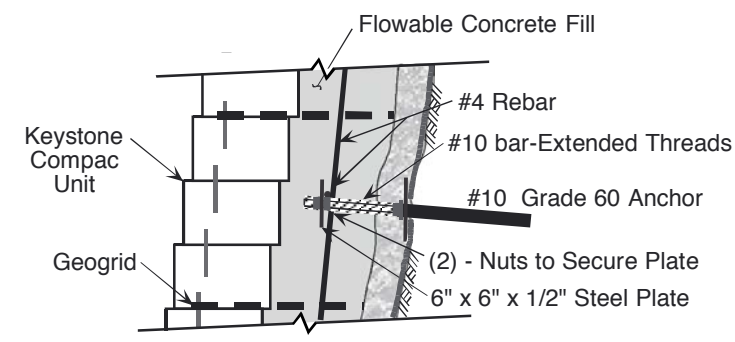
Designed By: cdm	Specialty Applications			Title Sheet	
Checked By:					
Date: 1/10/00	Scale:			Project No:	Drawing No. 1



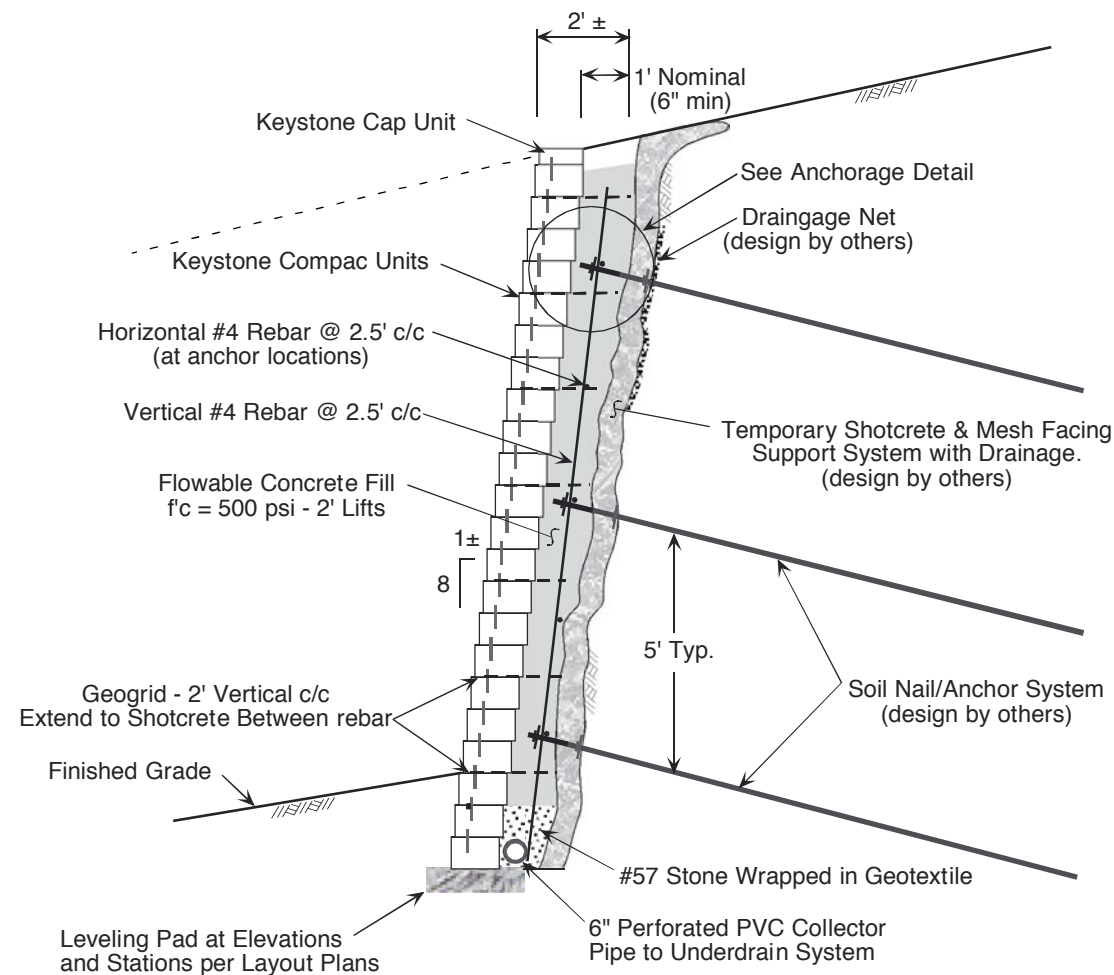
Typical Plan View



Typical Wall Elevation



Typical Anchorage Detail



Typical Soil Nail/Anchor Section

COPYRIGHT (c) 2000 by Keystone Retaining Wall Systems, Inc.

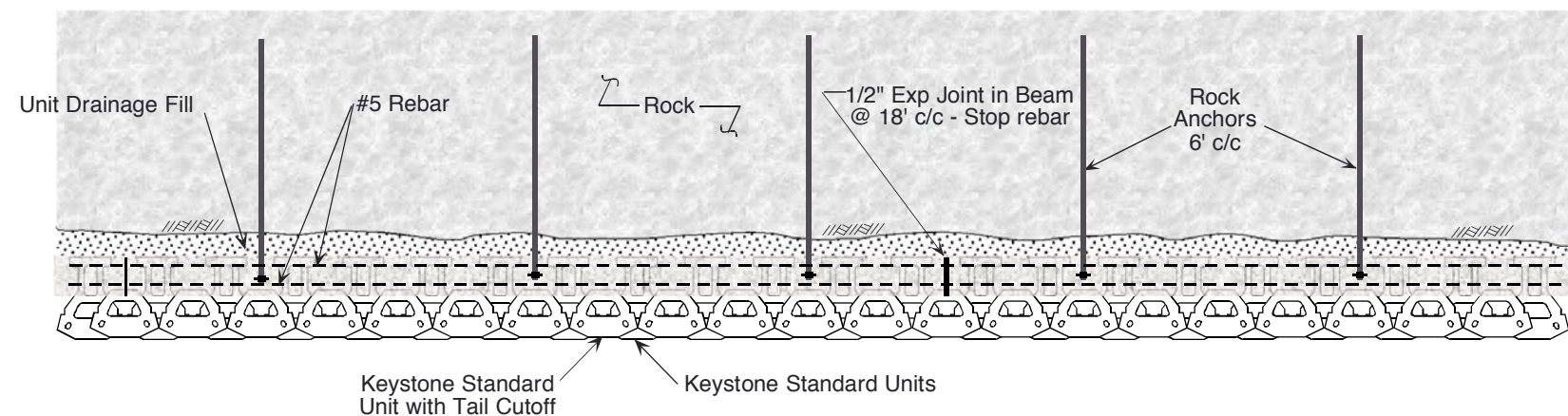
The information contained herein has been compiled by Keystone Retaining Wall Systems and to the best of our knowledge, accurately represents the Keystone product use in the applications which are illustrated. This drawing is being furnished for design guidance and estimating only. Final determination of the suitability for the use contemplated and its manner of use are the sole responsibility of the user. Structural and geotechnical design analysis shall be performed by a qualified engineer.

Any party accepting this document does so in confidence and agrees that it shall not be duplicated in whole or in part, nor disclosed to others without the consent of Keystone Retaining Wall Systems, Inc.

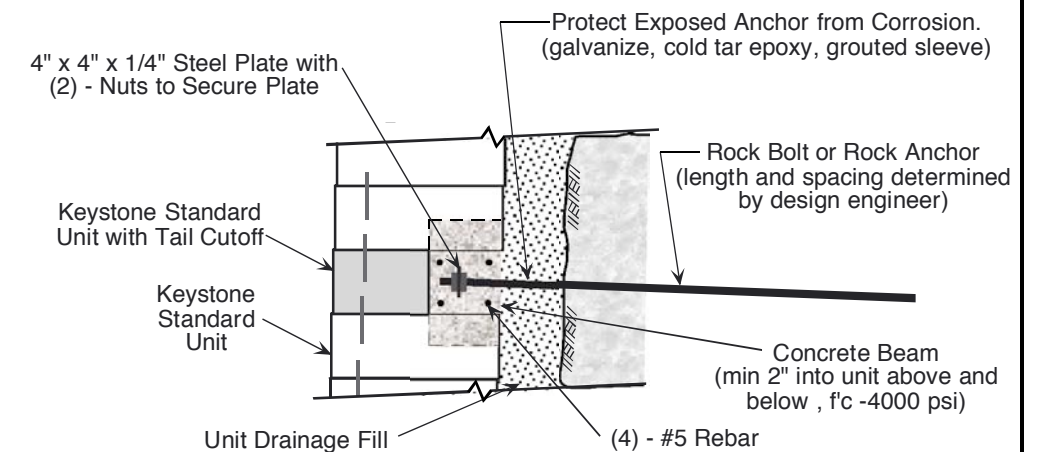
No.	Date	Revision	By



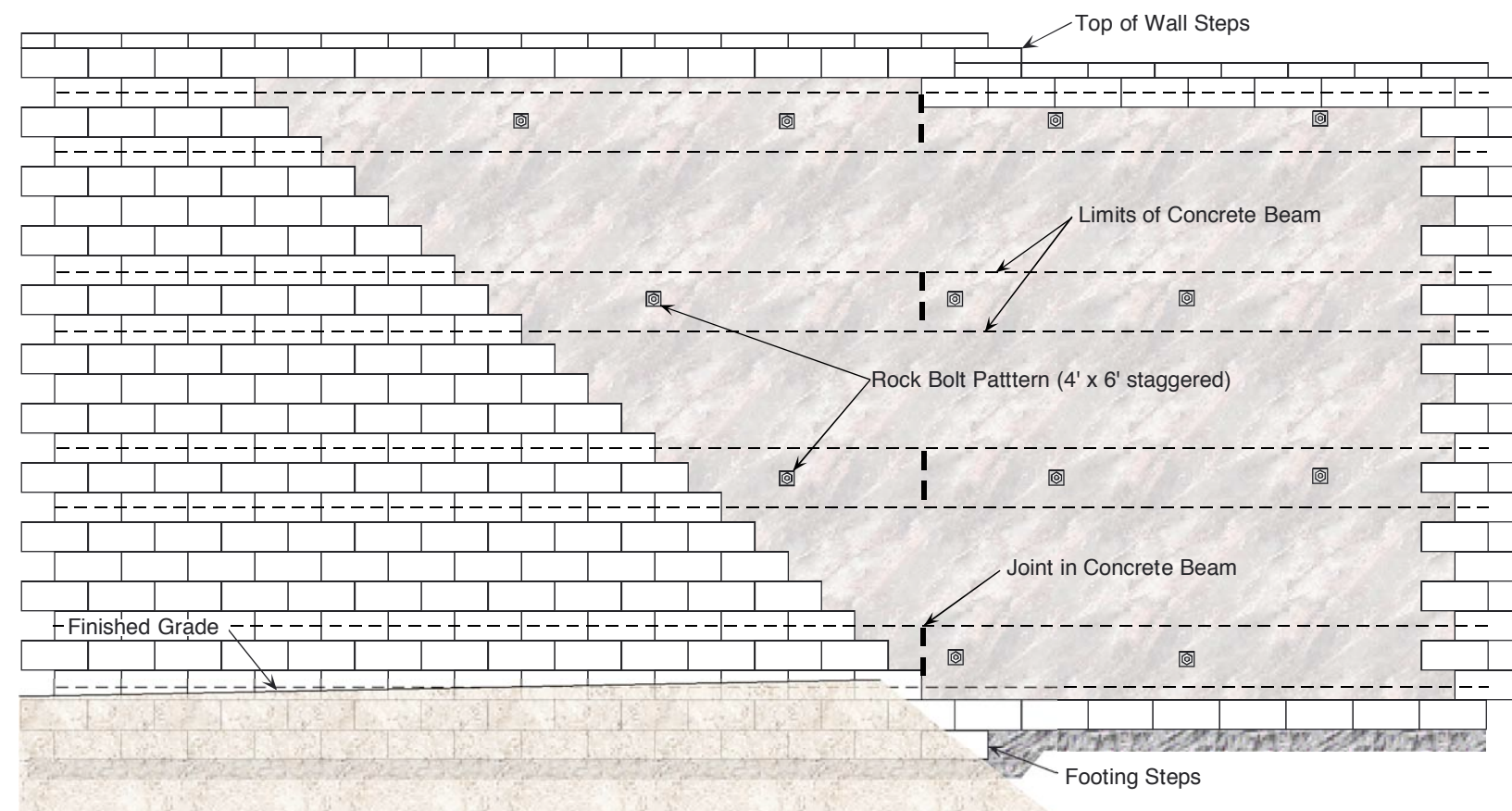
Designed By: cdm	Specialty Applications			Soil Nail Facing	
Checked By:					
Date: 1/10/00	Scale:			Project No:	Drawing No. 2



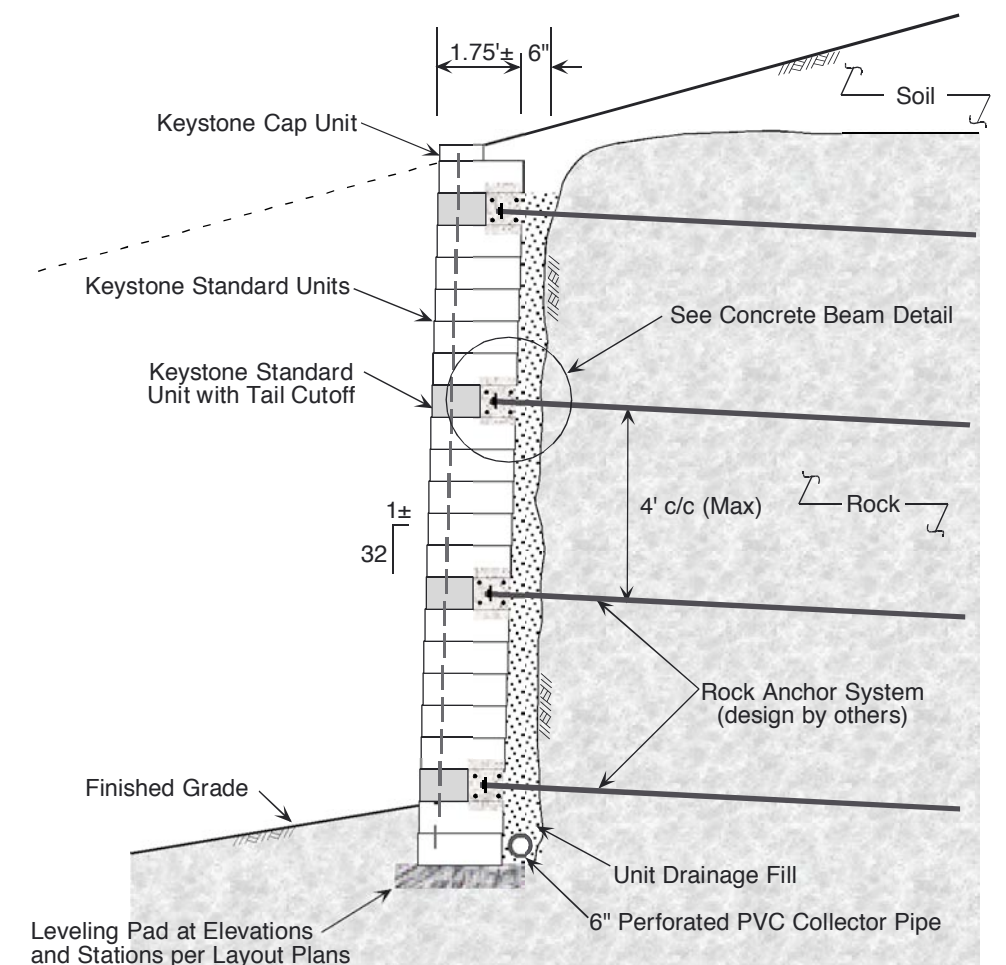
Typical Plan View



Typical Concrete Beam Detail



Typical Wall Elevation



Typical Rock Facing Section

COPYRIGHT (c) 2000 by Keystone Retaining Wall Systems, Inc.

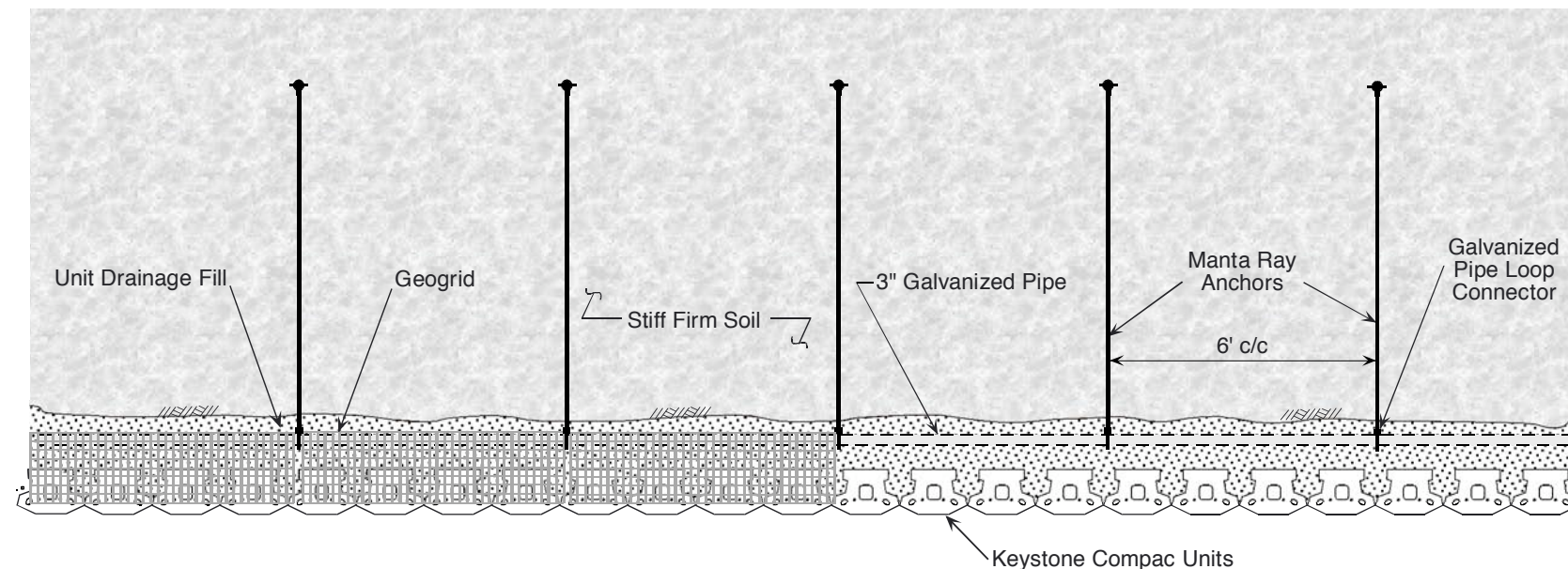
The information contained herein has been compiled by Keystone Retaining Wall Systems and to the best of our knowledge, accurately represents the Keystone product use in the applications which are illustrated. This drawing is being furnished for design guidance and estimating only. Final determination of the suitability for the use contemplated and its manner of use are the sole responsibility of the user. Structural and geotechnical design analysis shall be performed by a qualified engineer.

Any party accepting this document does so in confidence and agrees that it shall not be duplicated in whole or in part, nor disclosed to others without the consent of Keystone Retaining Wall Systems, Inc.

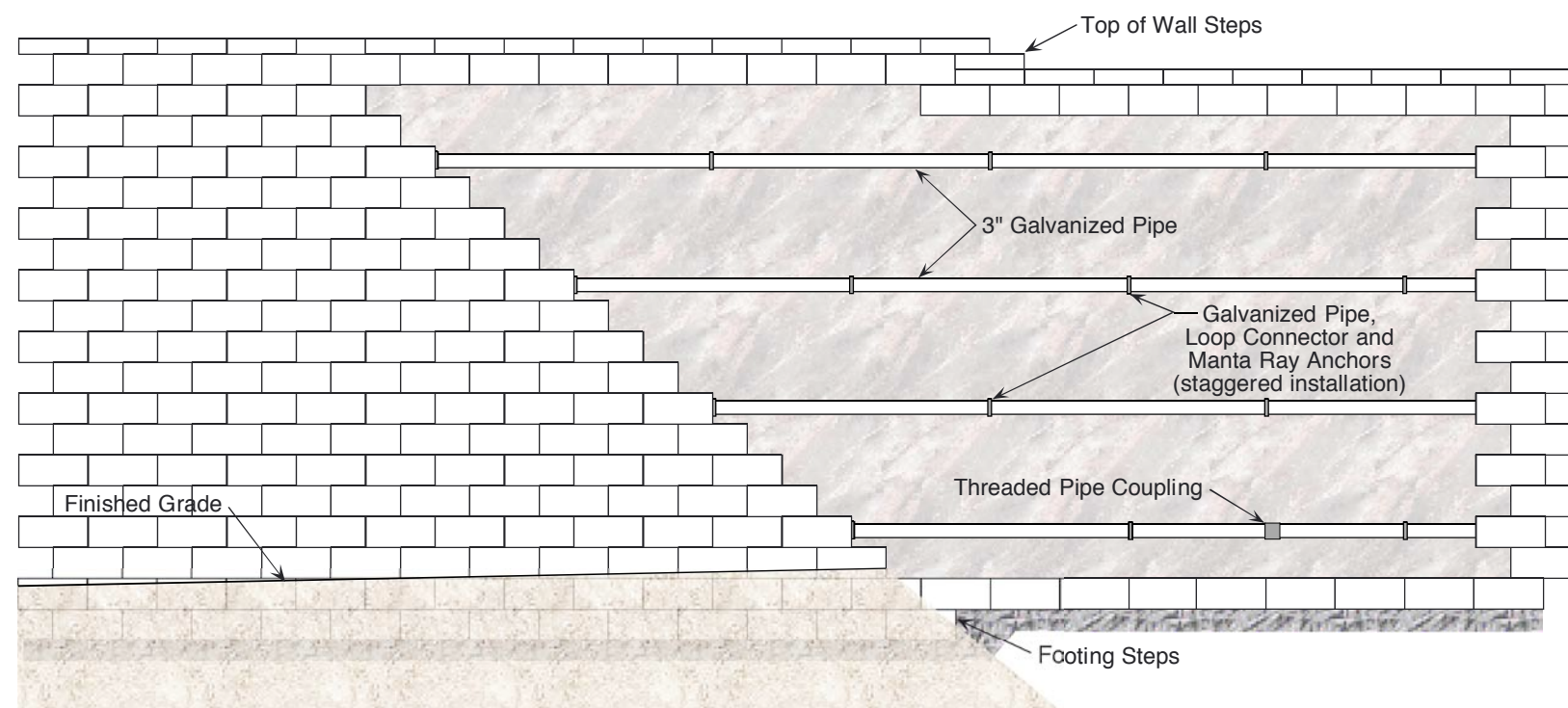
No.	Date	Revision	By



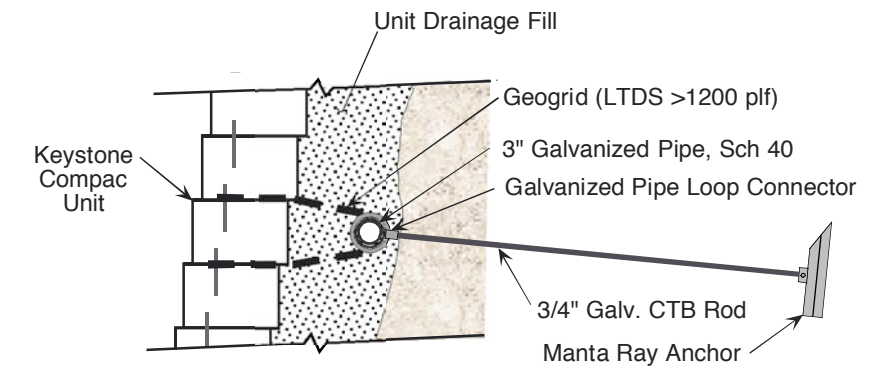
Designed By: cdm	Specialty Applications			Rock/Shotcrete Facing	
Checked By:					
Date: 1/10/00	Scale:			Project No:	Drawing No. 3



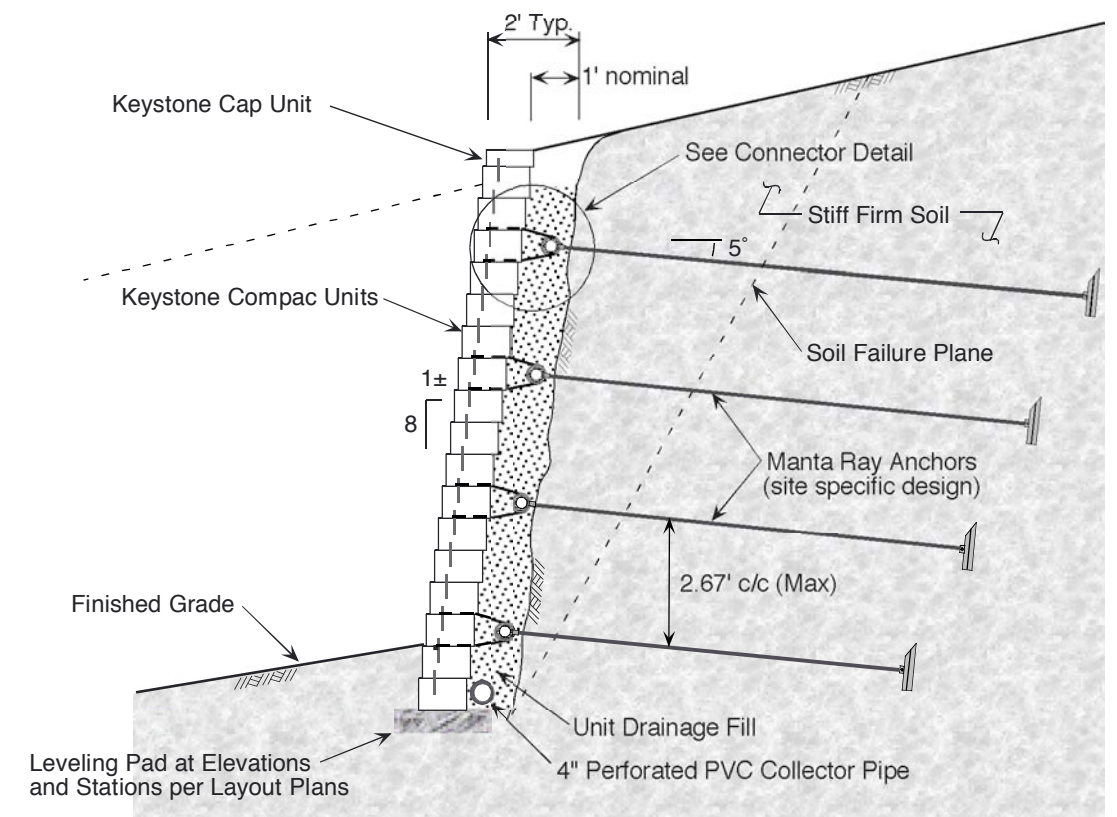
Typical Plan View



Typical Wall Elevation



Typical Connector Detail



Typical Manta Ray Anchor Section

COPYRIGHT (c) 2000 by Keystone Retaining Wall Systems, Inc.

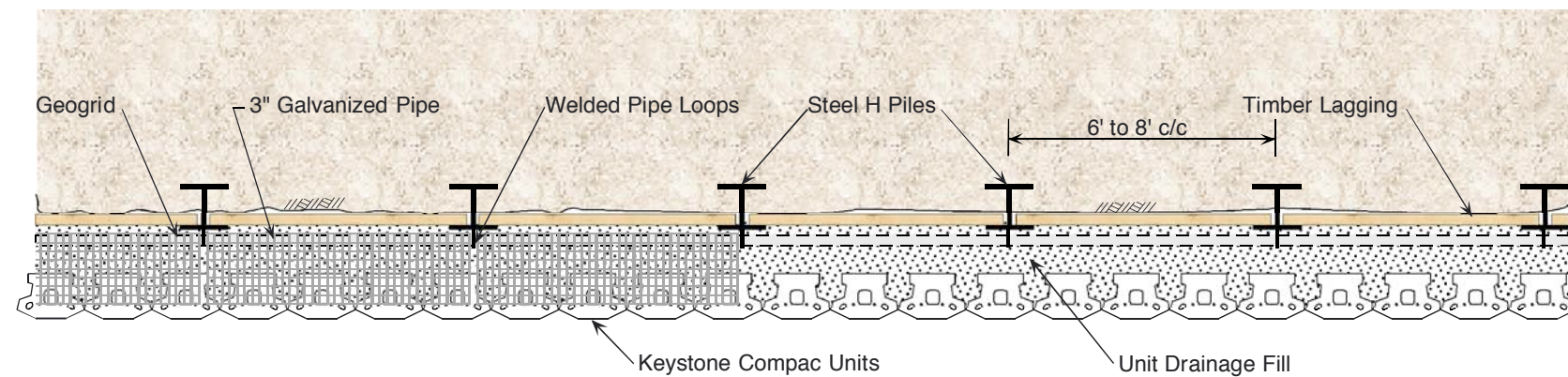
The information contained herein has been compiled by Keystone Retaining Wall Systems and to the best of our knowledge, accurately represents the Keystone product use in the applications which are illustrated. This drawing is being furnished for design guidance and estimating only. Final determination of the suitability for the use contemplated and its manner of use are the sole responsibility of the user. Structural and geotechnical design analysis shall be performed by a qualified engineer.

Any party accepting this document does so in confidence and agrees that it shall not be duplicated in whole or in part, nor disclosed to others without the consent of Keystone Retaining Wall Systems, Inc.

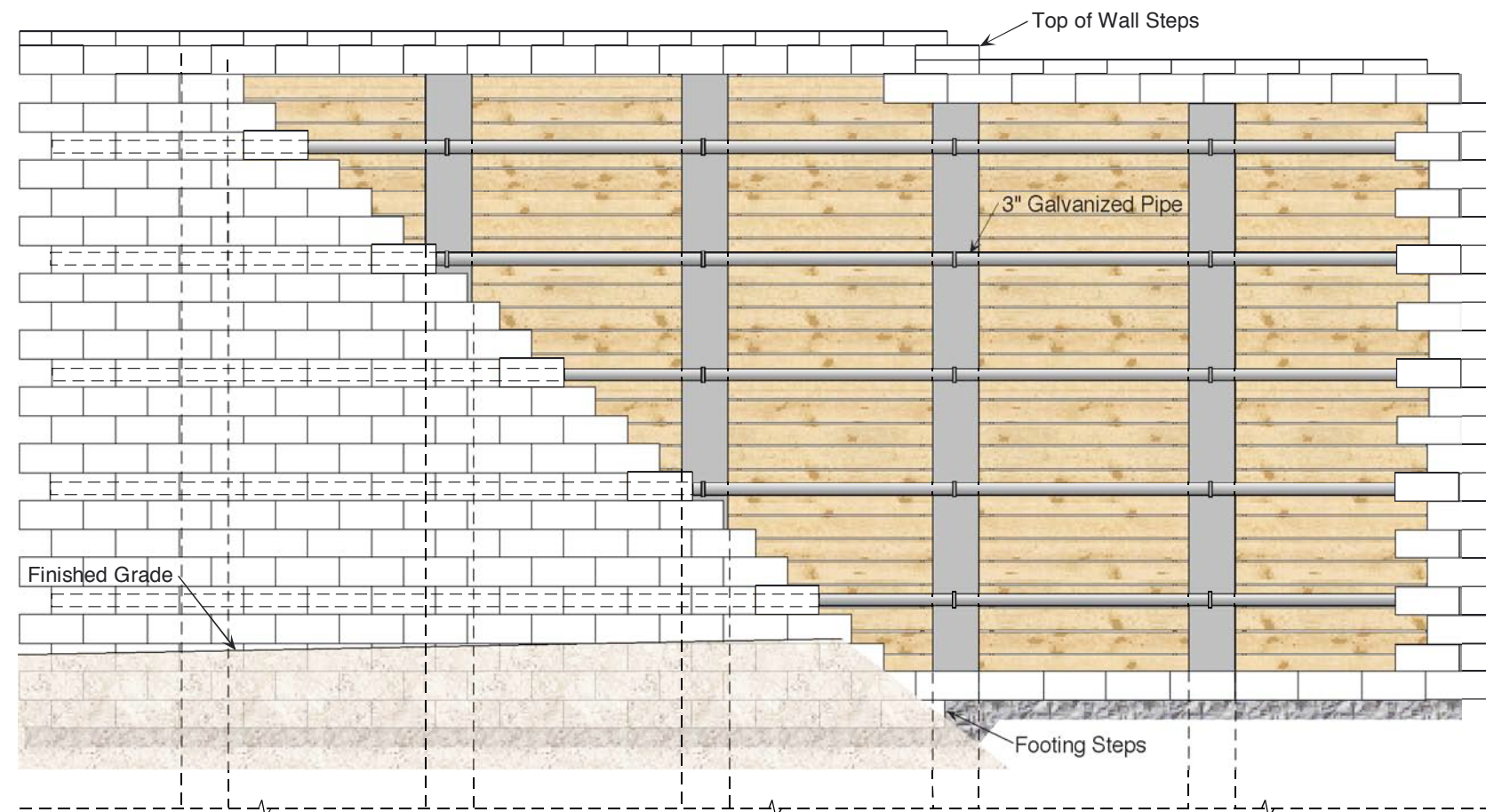
No.	Date	Revision	By



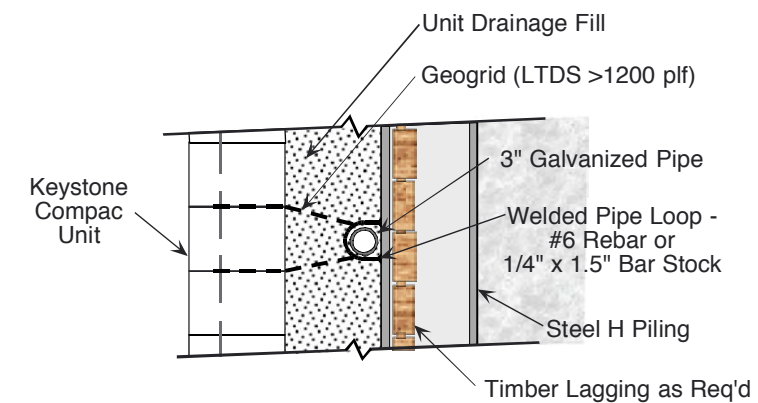
Designed By: cdm	Specialty Applications			Manta Ray Anchor Facing	
Checked By:					
Date: 1/10/00	Scale:			Project No:	Drawing No. 4



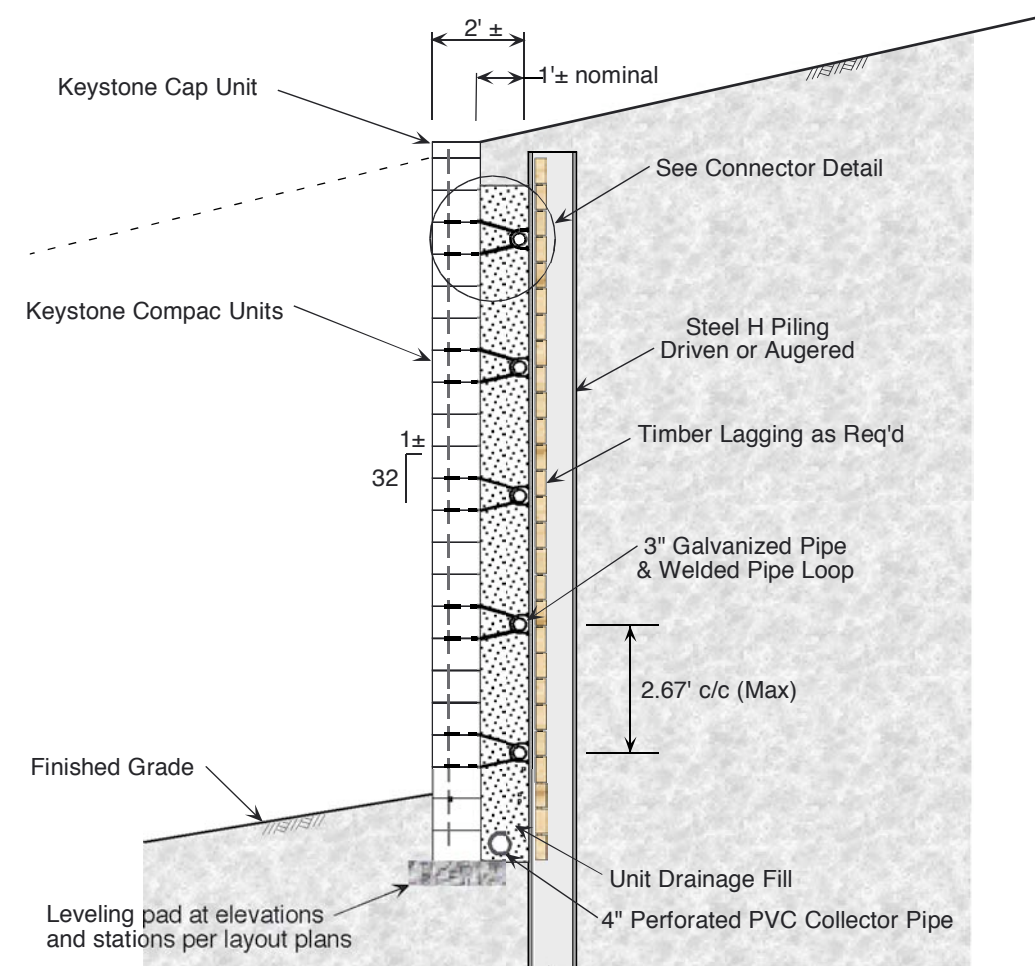
Typical Plan View



Typical Wall Elevation



Typical Connector Detail



Typical Pile & Lagging Wall Section

COPYRIGHT (c) 2000 by Keystone Retaining Wall Systems, Inc.

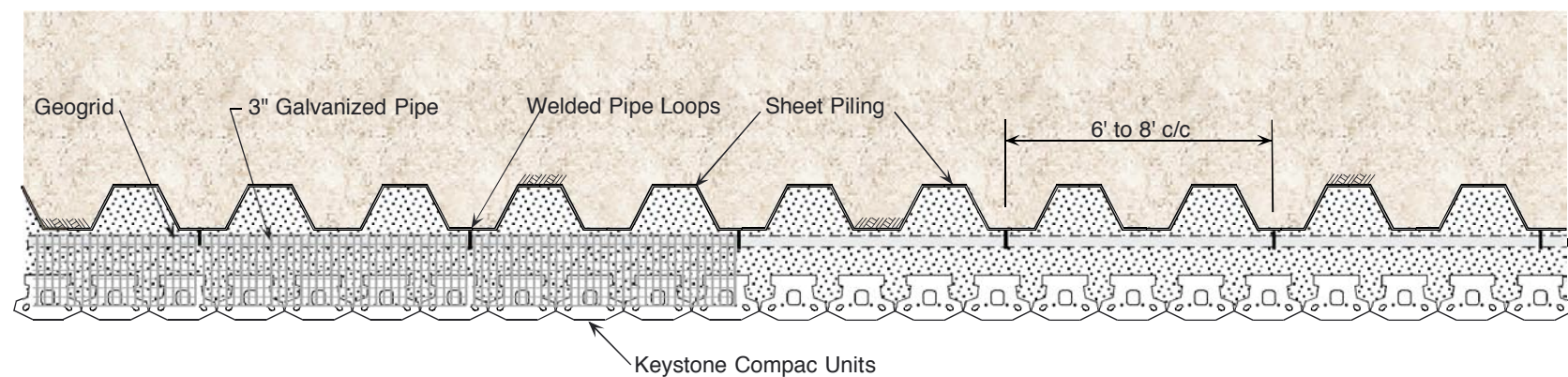
The information contained herein has been compiled by Keystone Retaining Wall Systems and to the best of our knowledge, accurately represents the Keystone product use in the applications which are illustrated. This drawing is being furnished for design guidance and estimating only. Final determination of the suitability for the use contemplated and its manner of use are the sole responsibility of the user. Structural and geotechnical design analysis shall be performed by a qualified engineer.

Any party accepting this document does so in confidence and agrees that it shall not be duplicated in whole or in part, nor disclosed to others without the consent of Keystone Retaining Wall Systems, Inc.

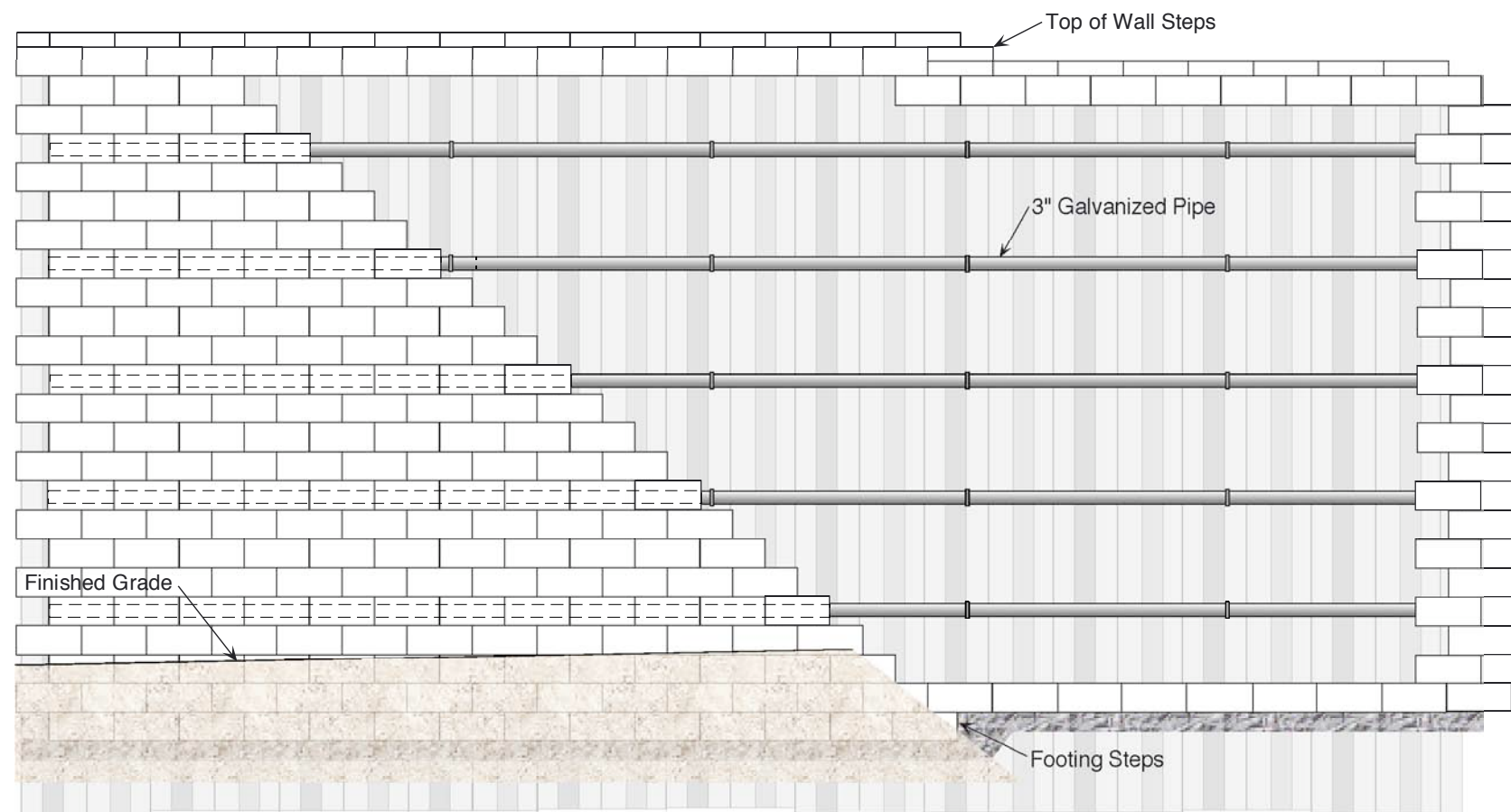
No.	Date	Revision	By



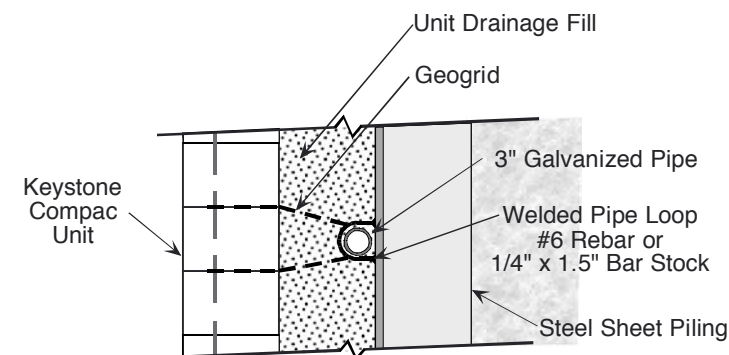
Designed By: cdm	Specialty Applications			Soldier Pile Facing	
Checked By:					
Date: 1/10/00	Scale:			Project No:	Drawing No. 5



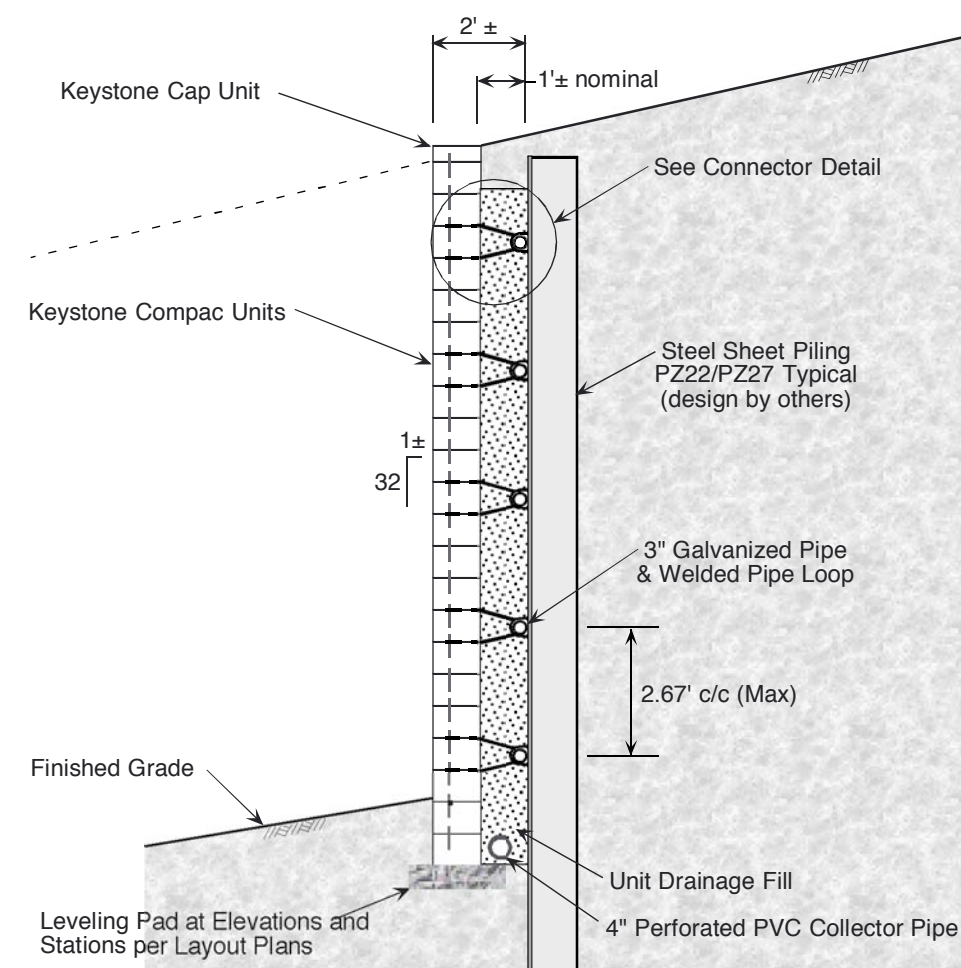
Typical Plan View



Typical Wall Elevation



Typical Connector Detail



Typical Sheet Piling Wall Section

COPYRIGHT (c) 2000 by Keystone Retaining Wall Systems, Inc.

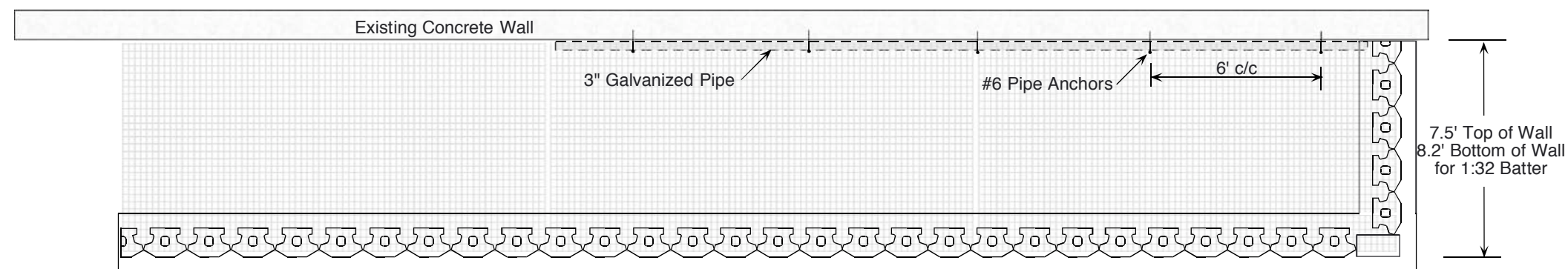
The information contained herein has been compiled by Keystone Retaining Wall Systems and to the best of our knowledge, accurately represents the Keystone product use in the applications which are illustrated. This drawing is being furnished for design guidance and estimating only. Final determination of the suitability for the use contemplated and its manner of use are the sole responsibility of the user. Structural and geotechnical design analysis shall be performed by a qualified engineer.

Any party accepting this document does so in confidence and agrees that it shall not be duplicated in whole or in part, nor disclosed to others without the consent of Keystone Retaining Wall Systems, Inc.

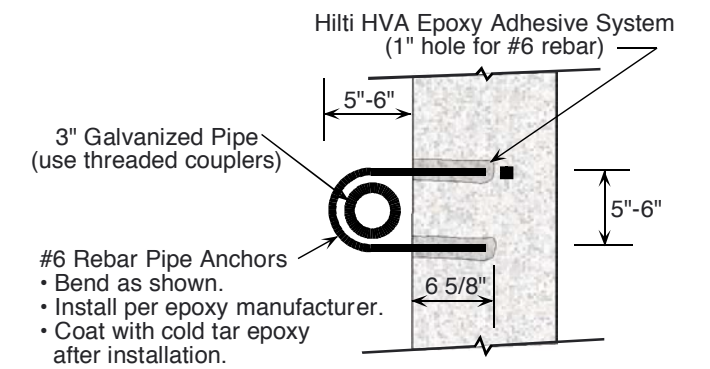
No.	Date	Revision	By



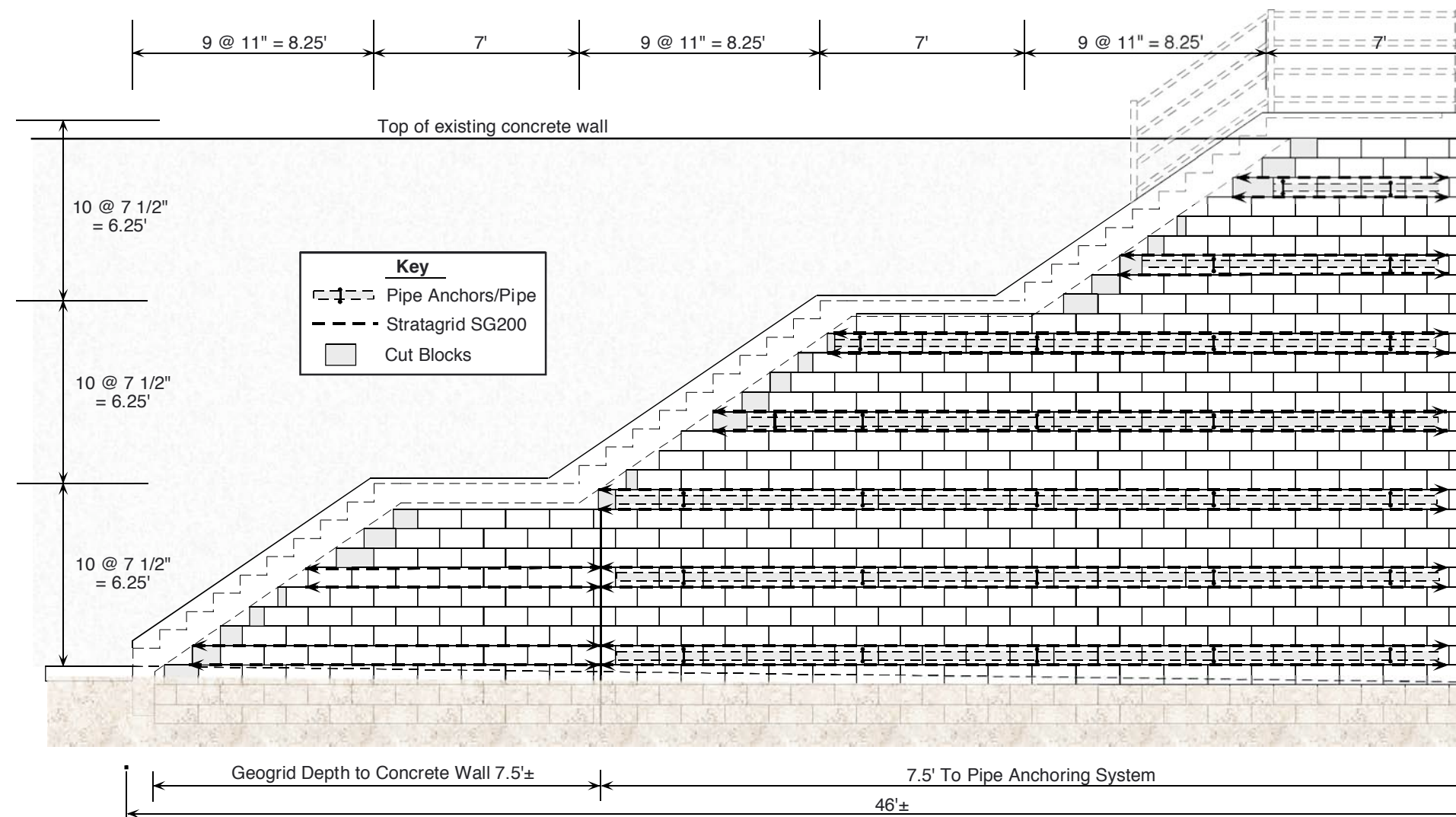
Designed By: cdm	Specialty Applications			Sheet Pile Facing	
Checked By:					
Date: 1/10/00	Scale:			Project No:	Drawing No. 6



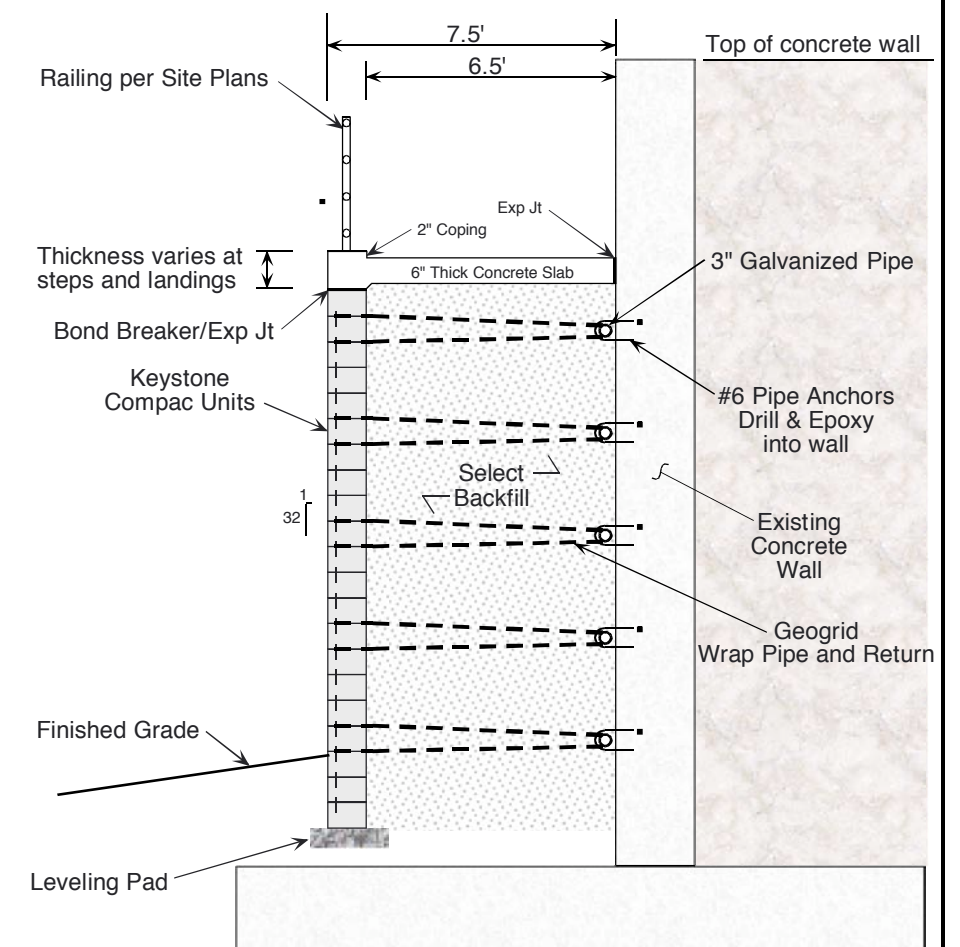
Plan View - Front Face



Pipe Anchor Detail



Elevation - Front Face



Typical Section - Second Landing

COPYRIGHT (c) 2000 by Keystone Retaining Wall Systems, Inc.

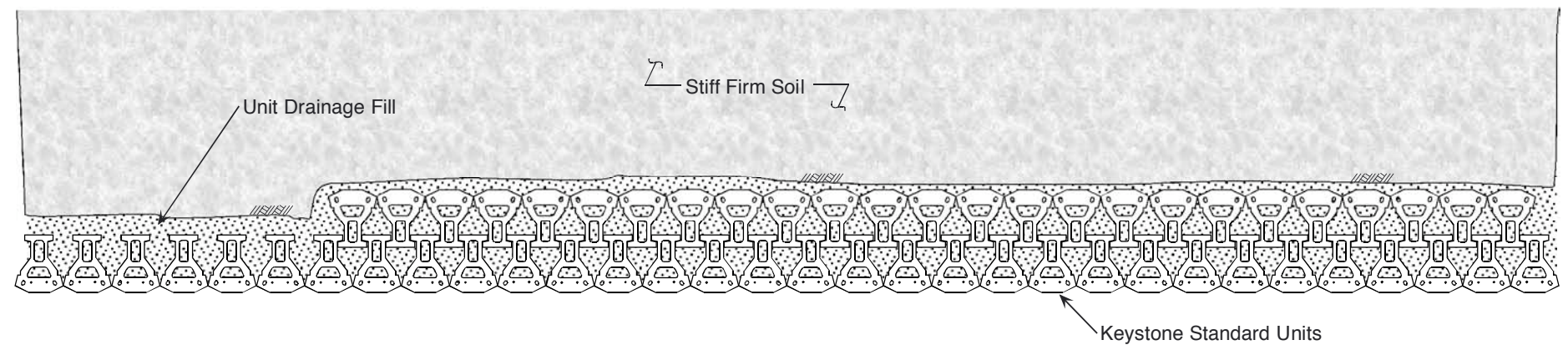
The information contained herein has been compiled by Keystone Retaining Wall Systems and to the best of our knowledge, accurately represents the Keystone product use in the applications which are illustrated. This drawing is being furnished for design guidance and estimating only. Final determination of the suitability for the use contemplated and its manner of use are the sole responsibility of the user. Structural and geotechnical design analysis shall be performed by a qualified engineer.

Any party accepting this document does so in confidence and agrees that it shall not be duplicated in whole or in part, nor disclosed to others without the consent of Keystone Retaining Wall Systems, Inc.

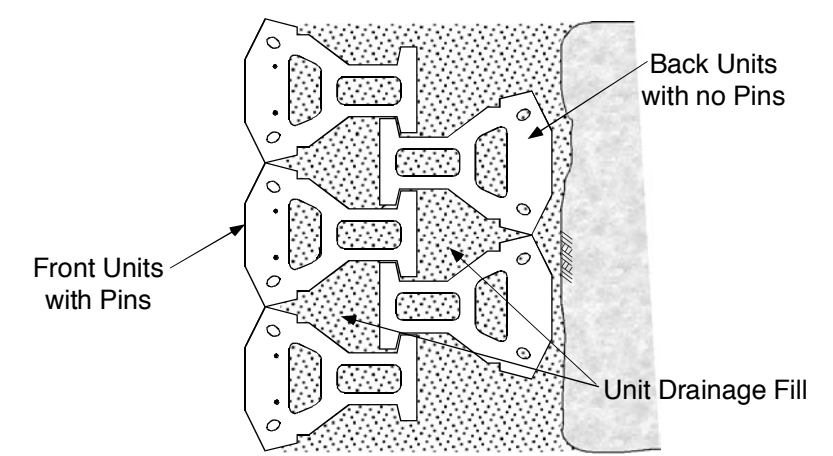
No.	Date	Revision	By



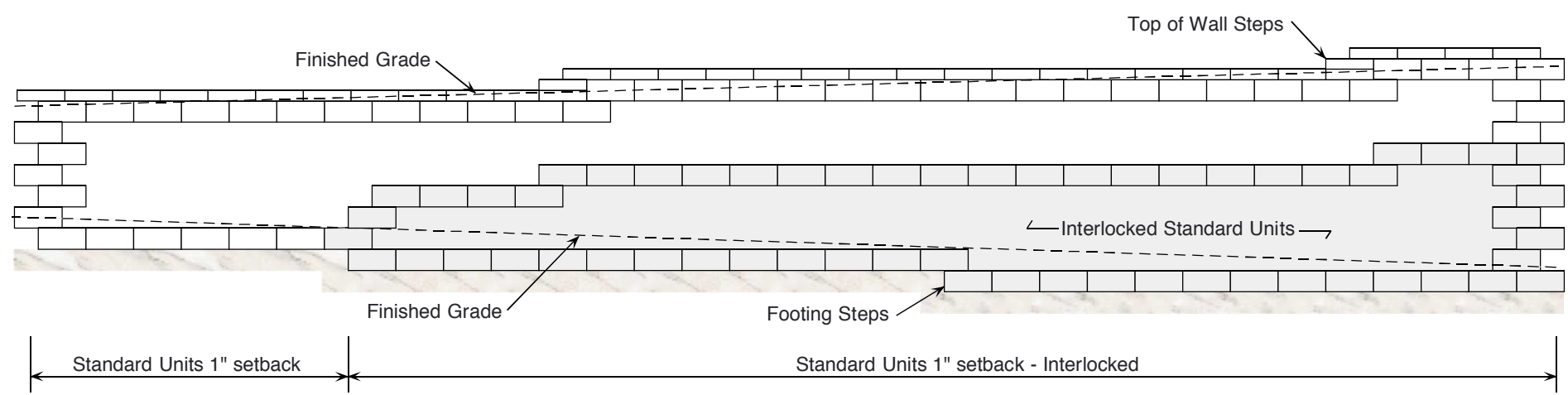
Designed By: cdm	Specialty Applications			Stairway Facing/ Concrete Wall	
Checked By:					
Date: 1/10/00	Scale:			Project No:	Drawing No. 7



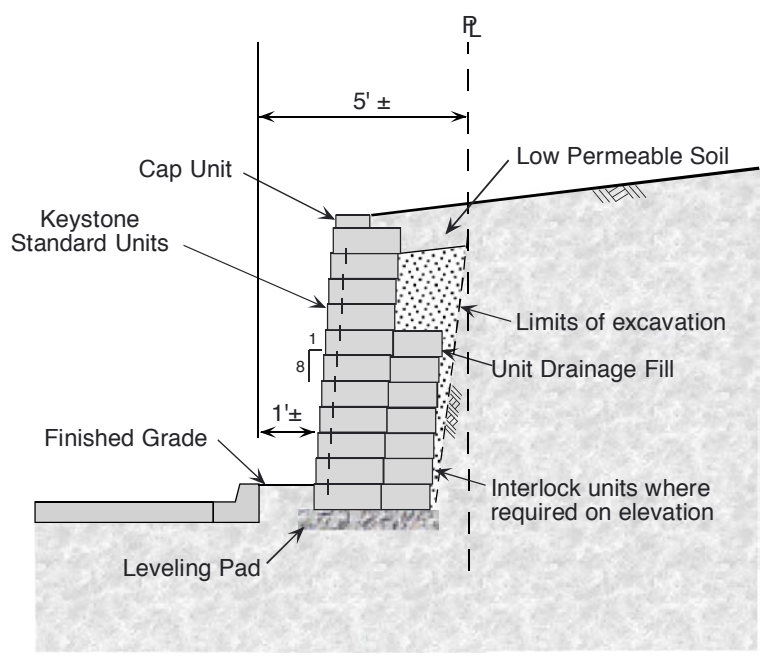
Typical Plan View



Typical Detail



Typical Wall Elevation



Typical Interlocked Wall Section

COPYRIGHT (c) 2000 by Keystone Retaining Wall Systems, Inc.

The information contained herein has been compiled by Keystone Retaining Wall Systems and to the best of our knowledge, accurately represents the Keystone product use in the applications which are illustrated. This drawing is being furnished for design guidance and estimating only. Final determination of the suitability for the use contemplated and its manner of use are the sole responsibility of the user. Structural and geotechnical design analysis shall be performed by a qualified engineer.

Any party accepting this document does so in confidence and agrees that it shall not be duplicated in whole or in part, nor disclosed to others without the consent of Keystone Retaining Wall Systems, Inc.

No.	Date	Revision	By

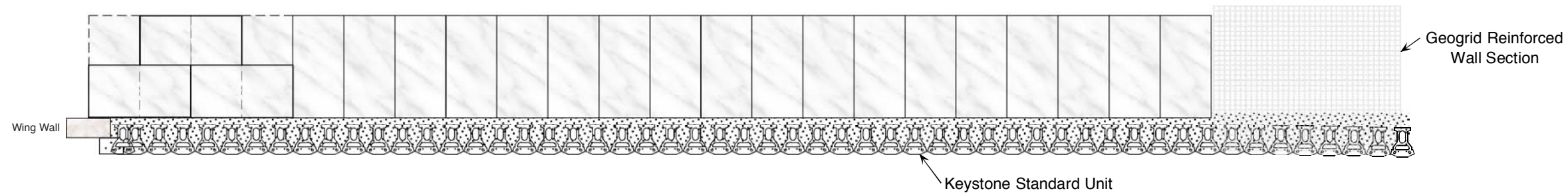


Designed By:
cdm
Checked By:
Date:
1/10/00

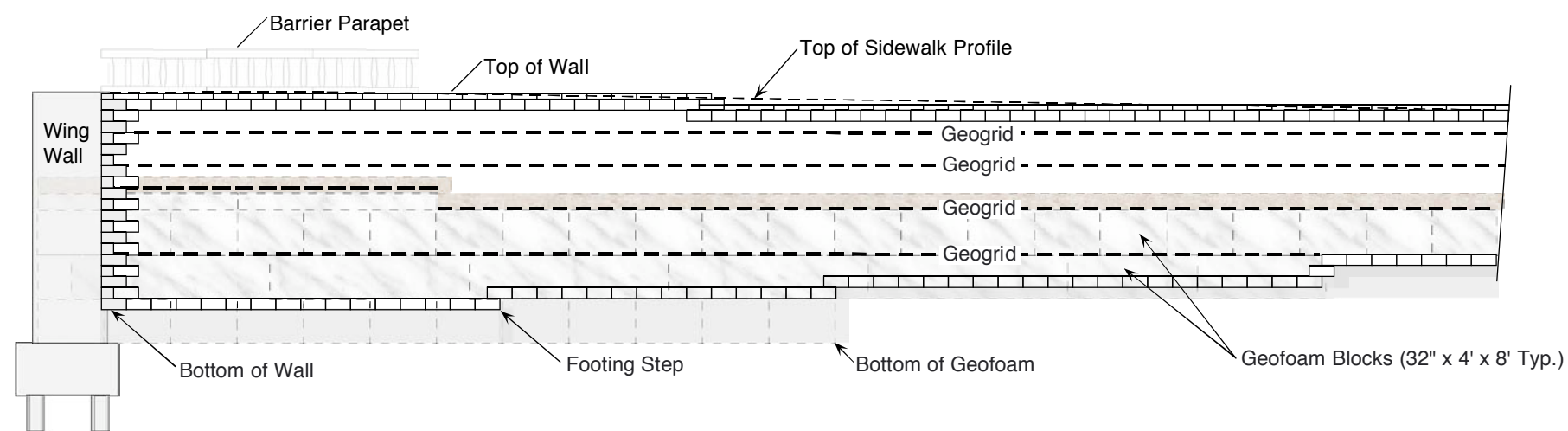
Specialty Applications

Interlocking Standard Units

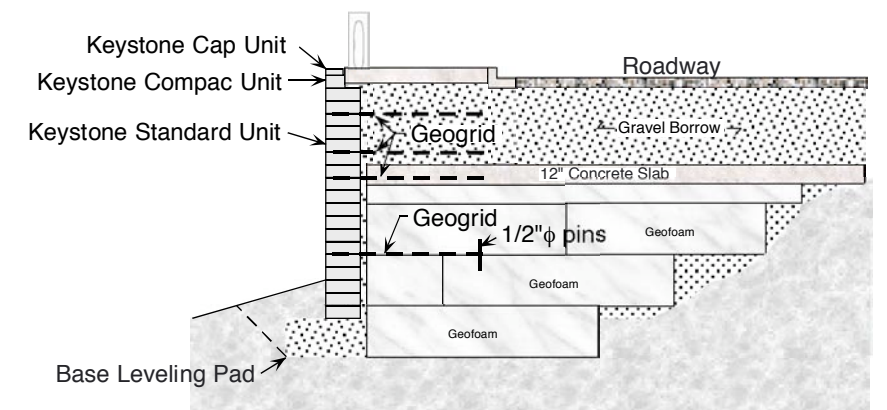
Project No:
Drawing No. 8



Typical Wall Plan



Elevation - Front Face



Typical Section

COPYRIGHT (c) 2000 by Keystone Retaining Wall Systems, Inc.

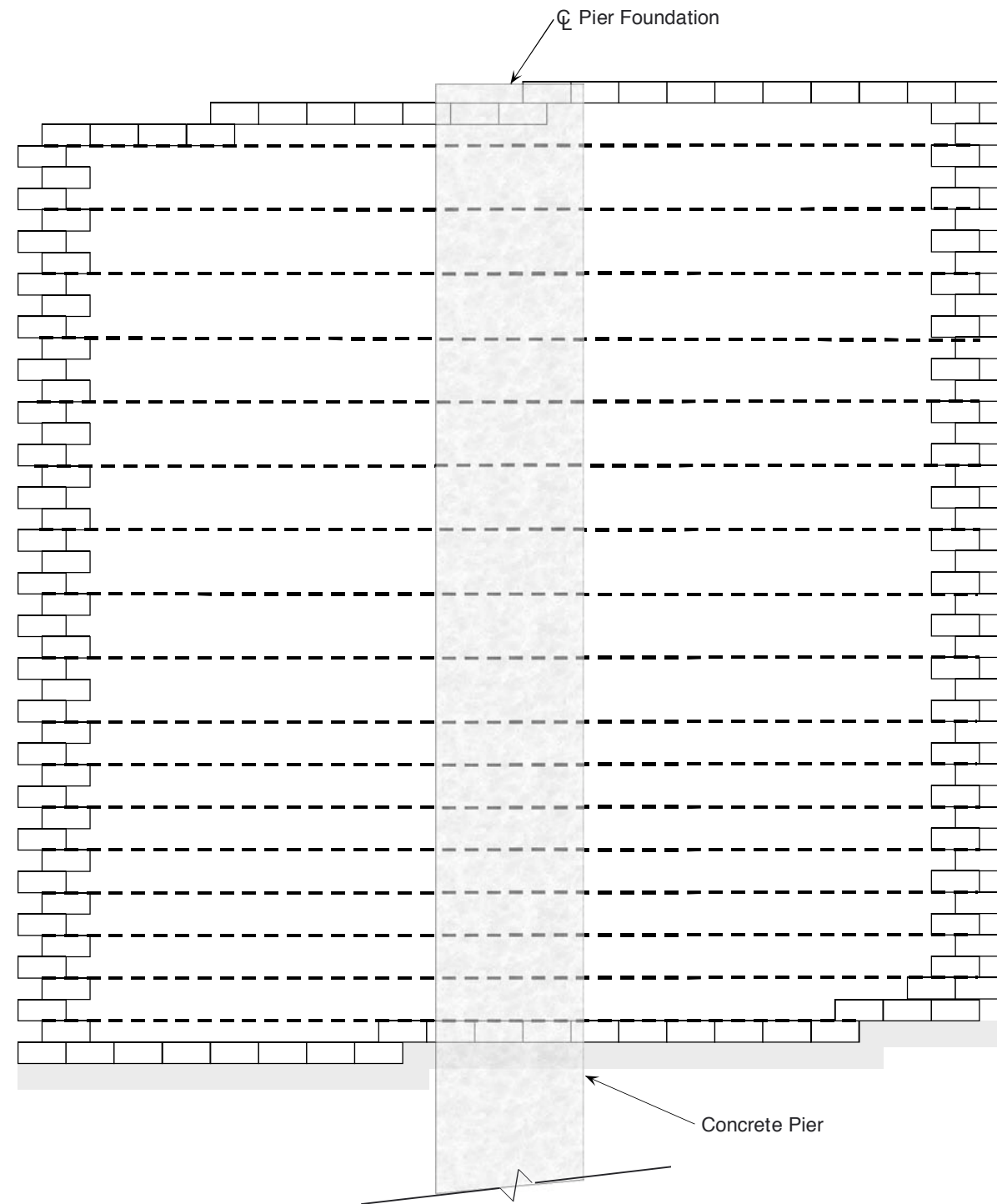
The information contained herein has been compiled by Keystone Retaining Wall Systems and to the best of our knowledge, accurately represents the Keystone product use in the applications which are illustrated. This drawing is being furnished for design guidance and estimating only. Final determination of the suitability for the use contemplated and its manner of use are the sole responsibility of the user. Structural and geotechnical design analysis shall be performed by a qualified engineer.

Any party accepting this document does so in confidence and agrees that it shall not be duplicated in whole or in part, nor disclosed to others without the consent of Keystone Retaining Wall Systems, Inc.

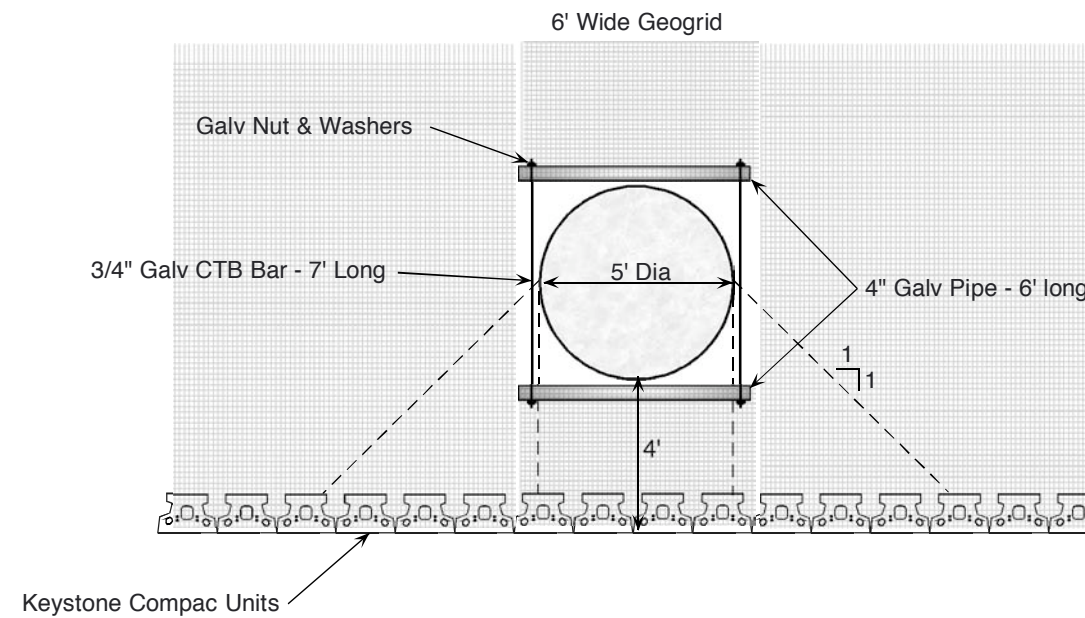
No.	Date	Revision	By



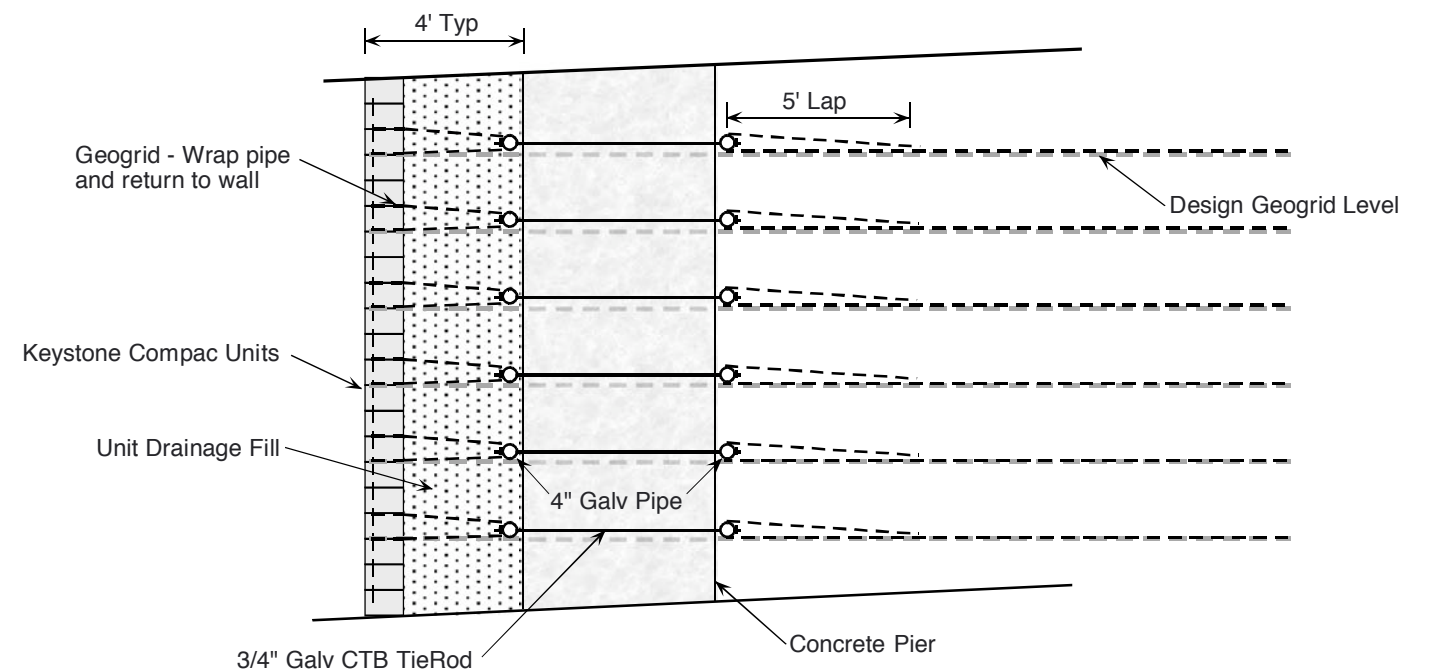
Designed By: cdm	Specialty Applications			Keystone/Geofoam Wall	
Checked By:					
Date: 1/10/00	Scale:			Project No:	Drawing No. 9



Wall Elevation @ Pier



Wall Plan @ Pier



Wall Section @ Pier

COPYRIGHT (c) 2000 by Keystone Retaining Wall Systems, Inc.

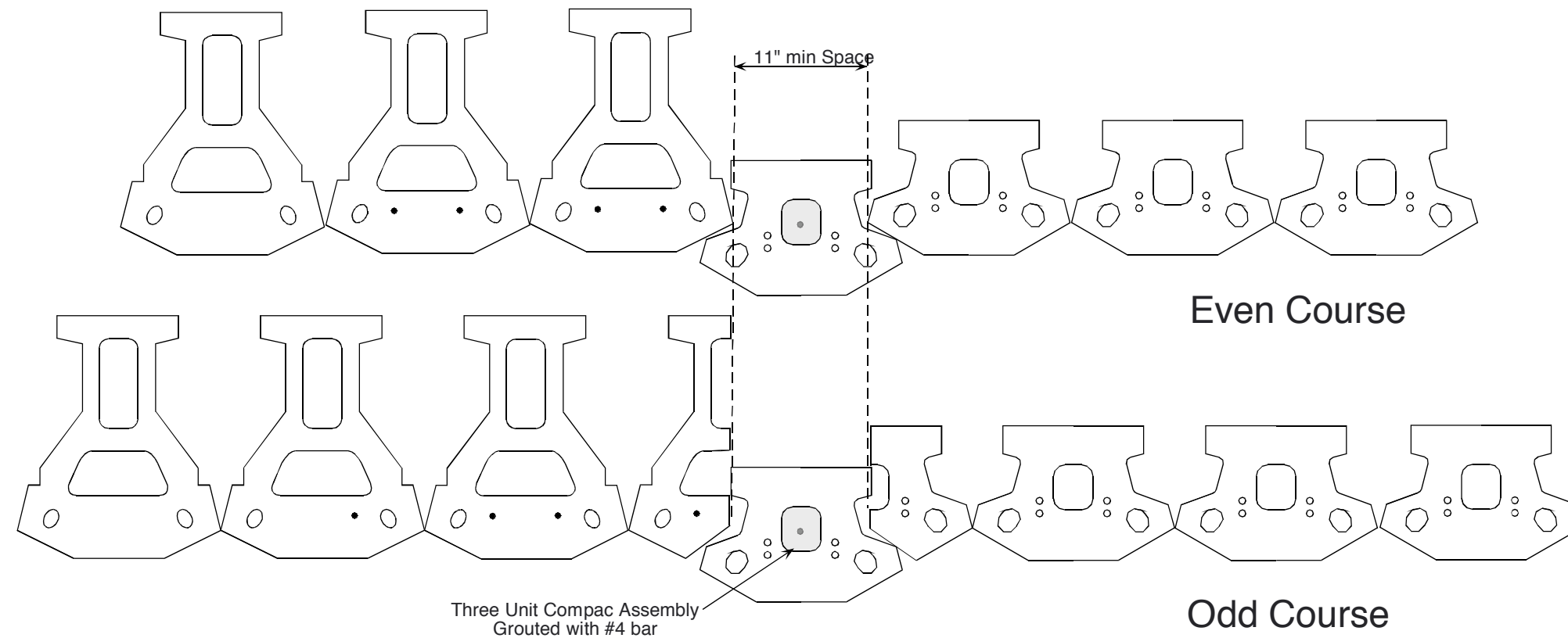
The information contained herein has been compiled by Keystone Retaining Wall Systems and to the best of our knowledge, accurately represents the Keystone product use in the applications which are illustrated. This drawing is being furnished for design guidance and estimating only. Final determination of the suitability for the use contemplated and its manner of use are the sole responsibility of the user. Structural and geotechnical design analysis shall be performed by a qualified engineer.

Any party accepting this document does so in confidence and agrees that it shall not be duplicated in whole or in part, nor disclosed to others without the consent of Keystone Retaining Wall Systems, Inc.

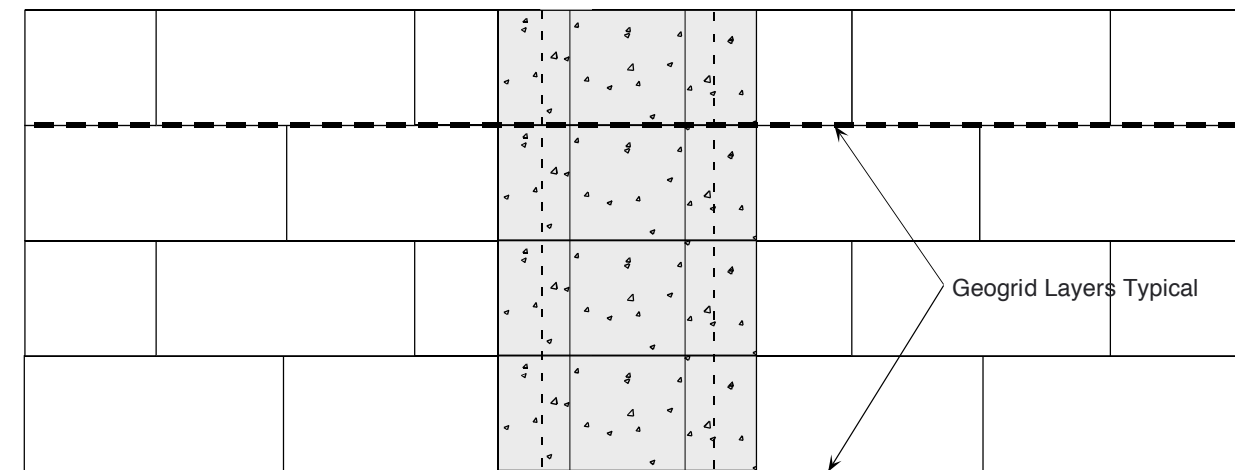
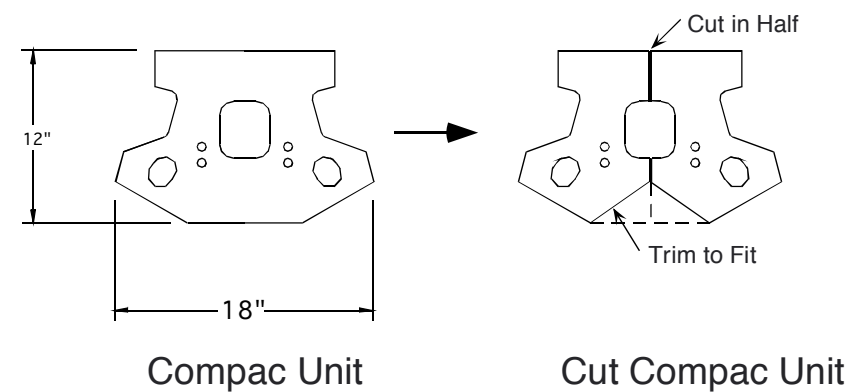
No.	Date	Revision	By



Designed By: cdm	Specialty Applications			Foundation Obstruction	
Checked By:					
Date: 1/10/00	Scale:			Project No:	Drawing No. 10



Plan View



Front Elevation

COPYRIGHT (c) 2000 by Keystone Retaining Wall Systems, Inc.

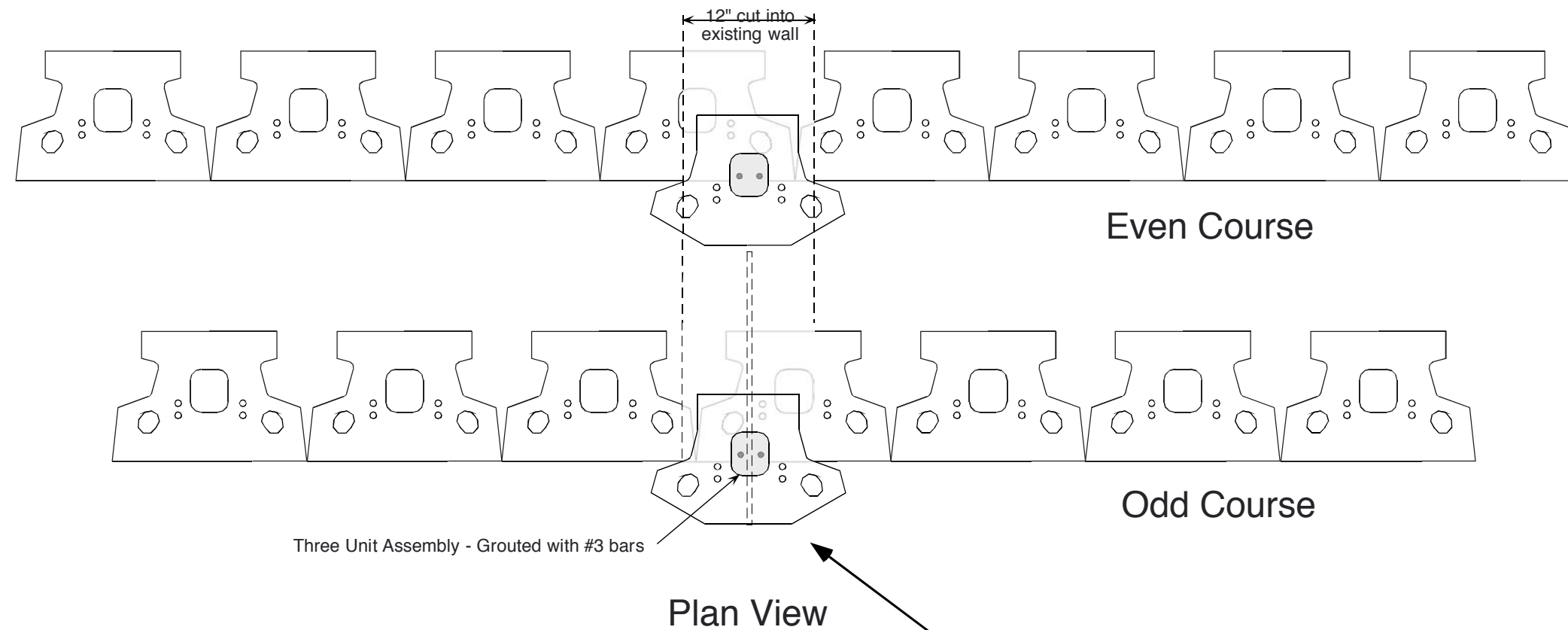
The information contained herein has been compiled by Keystone Retaining Wall Systems and to the best of our knowledge, accurately represents the Keystone product use in the applications which are illustrated. This drawing is being furnished for design guidance and estimating only. Final determination of the suitability for the use contemplated and its manner of use are the sole responsibility of the user. Structural and geotechnical design analysis shall be performed by a qualified engineer.

Any party accepting this document does so in confidence and agrees that it shall not be duplicated in whole or in part, nor disclosed to others without the consent of Keystone Retaining Wall Systems, Inc.

No.	Date	Revision	By

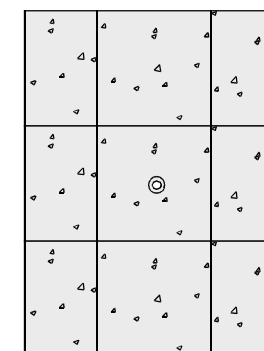
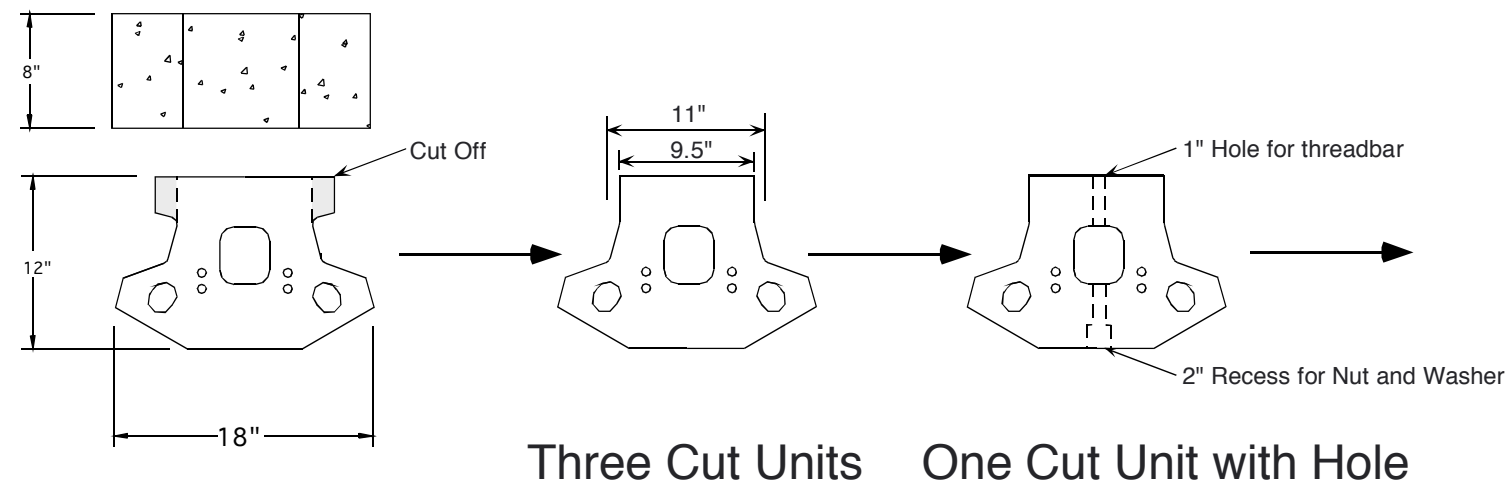


Designed By: cdm	Specialty Applications			Slip Joint Installation	
Checked By:					
Date: 1/10/00	Scale:			Project No:	Drawing No. 11

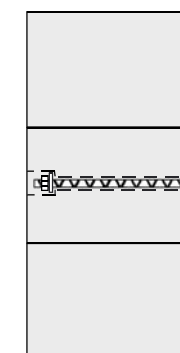


Installation

1. Cut out wall in 3-4 unit segments.
2. Drive anchor into backfill and lock.
3. Install three unit slip joint segment.
4. Repeat as required.



3 Unit Assembly



Anchored 3 Unit Assembly

MR-88 Manta Ray Drive Anchor and 6' Threadbar

COPYRIGHT (c) 2000 by Keystone Retaining Wall Systems, Inc.

The information contained herein has been compiled by Keystone Retaining Wall Systems and to the best of our knowledge, accurately represents the Keystone product use in the applications which are illustrated. This drawing is being furnished for design guidance and estimating only. Final determination of the suitability for the use contemplated and its manner of use are the sole responsibility of the user. Structural and geotechnical design analysis shall be performed by a qualified engineer.

Any party accepting this document does so in confidence and agrees that it shall not be duplicated in whole or in part, nor disclosed to others without the consent of Keystone Retaining Wall Systems, Inc.

No.	Date	Revision	By



Designed By: cdm	Specialty Applications			In-Situ Slip Joint	
Checked By:					
Date: 1/10/00	Scale:			Project No:	Drawing No. 12