



1/10/2012
cdm

CONNECTION EVALUATION

Keystone Unit: Standard
Manufacturer: Mirafi
Geogrid Type: 2XT
Laboratory: BCGT 1/4/2007

Peak Connection Equation Fit

	English	Metric
Intercept (plf)	1850	27.00
Slope1	2.5	2.5
Break - Normal	4065	59.33
Slope2	0.0	0.0
Maximum (plf)	2027	29.59

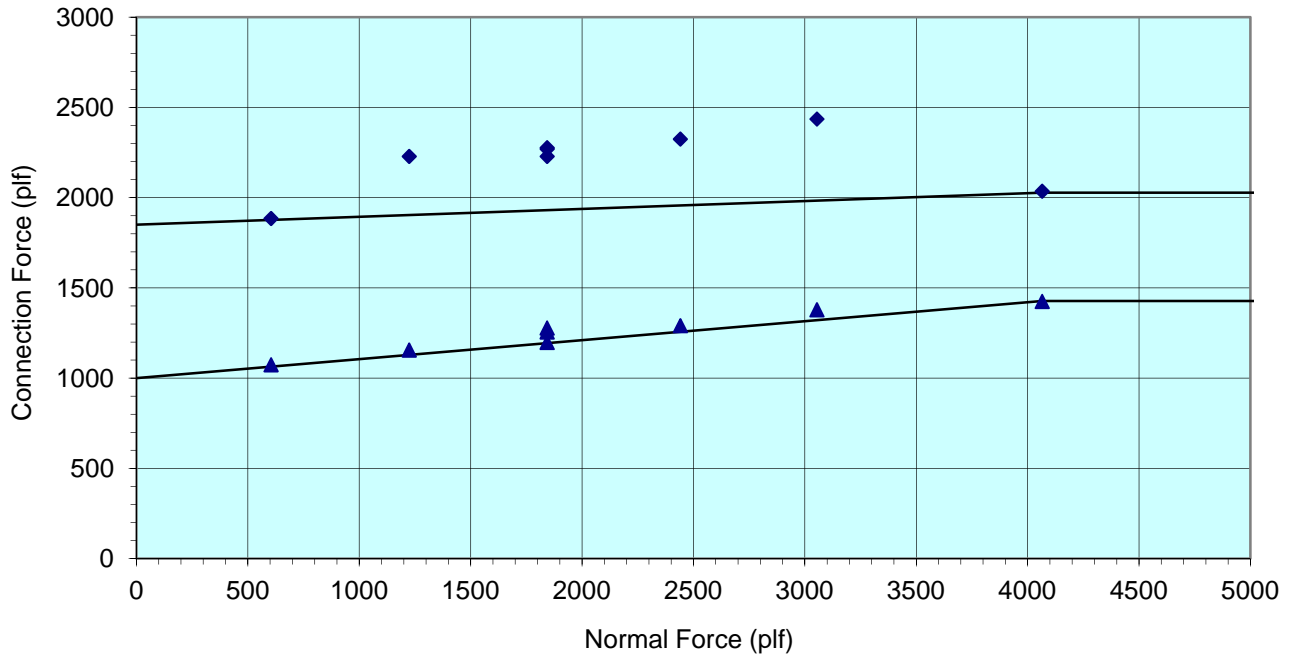
3/4" Serviceability Equation Fit

Intercept (plf)	1000	14.59
Slope1	6.0	6.0
Break - Normal	4065	59.33
Slope2	0.0	0.0
Maximum (plf)	1427	20.83

Laboratory Test Data

Normal Load (plf)	Peak Connection (plf)	3/4" Connection (plf)
604	1885	1074
1224	2229	1156
1843	2229	1198
1843	2270	1278
1843	2277	1256
2441	2325	1291
3054	2436	1379
4065	2036	1425

NCMA Connection Capacity





CONNECTION EVALUATION

Keystone Unit: Standard
 Manufacturer: Mirafi
 Geogrid Type: 3XT
 Laboratory: TRI Texas 5/23/2002

Peak Connection Equation Fit

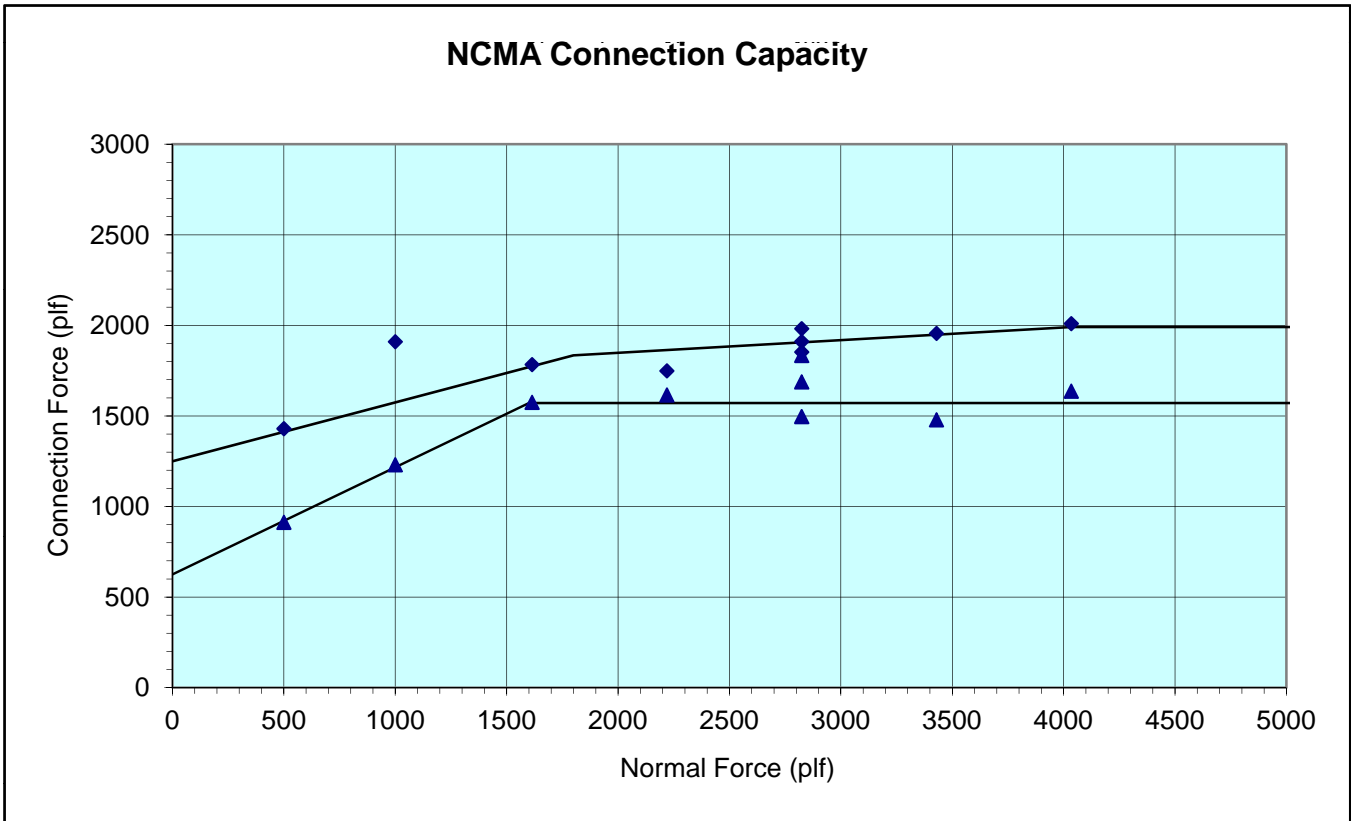
	English	Metric
Intercept (plf)	1250	18.24
Slope1	18.0	18.0
Break - Normal	1800	26.27
Slope2	4.0	4.0
Maximum (plf)	1991	29.06

3/4" Serviceability Equation Fit

Intercept (plf)	625	9.12
Slope1	30.6	30.6
Break - Normal	1600	23.35
Slope2	0.0	0.0
Maximum (plf)	1571	22.93

Laboratory Test Data

Normal Load (plf)	Peak Connection (plf)	3/4" Connection (plf)
500	1430	913
1000	1910	1231
1614	1784	1575
2219	1749	1616
2824	1982	1688
2824	1853	1834
2824	1911	1497
3429	1956	1479
4034	2010	1637





1/10/2012
cdm

CONNECTION EVALUATION

Keystone Unit: Standard
Manufacturer: Mirafi
Geogrid Type: 5XT
Laboratory: TRI Texas 5/23/2002

Laboratory Test Data

Normal Load (plf)	Peak Connection (plf)	3/4" Connection (plf)
500	1195	859
1000	1720	1196
1614	2337	1669
2219	2474	2248
2824	2283	2283
2824	2219	2002
2824	2470	1880
3429	2568	1956
4034	2270	1887

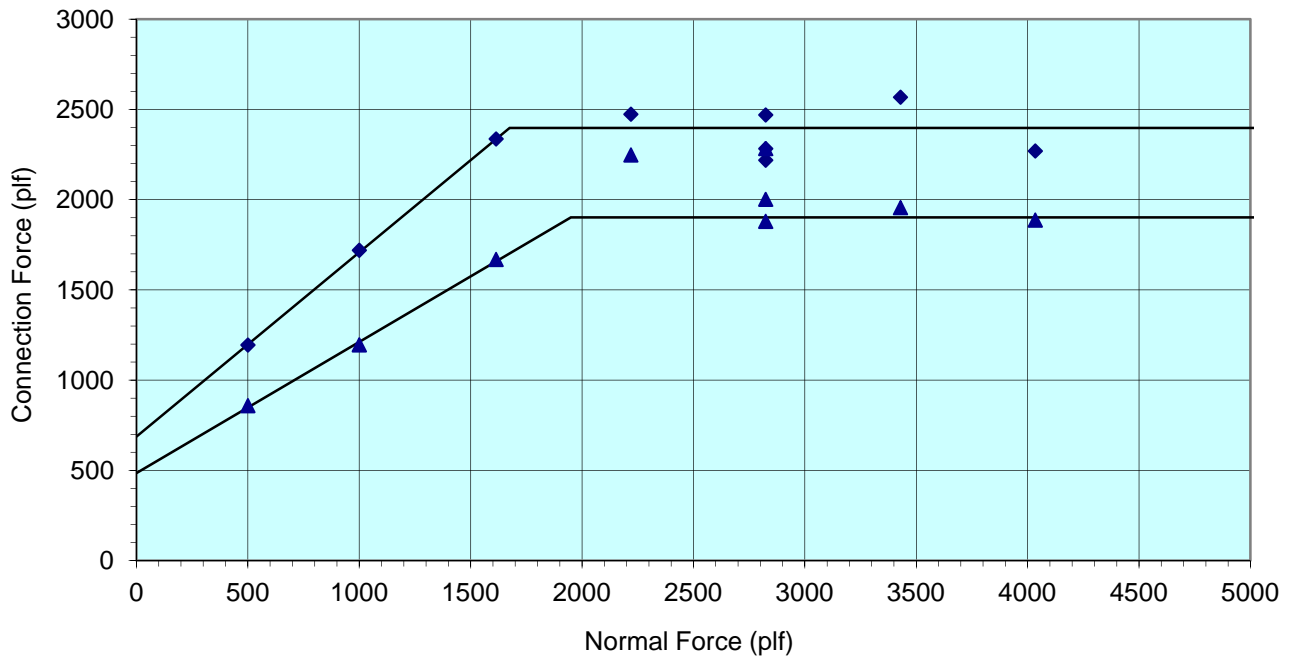
Peak Connection Equation Fit

	English	Metric
Intercept (plf)	687	10.03
Slope1	45.6	45.6
Break - Normal	1675	24.45
Slope2	0.0	0.0
Maximum (plf)	2397	34.99

3/4" Serviceability Equation Fit

	English	Metric
Intercept (plf)	485	7.08
Slope1	36.0	36.0
Break - Normal	1950	28.46
Slope2	0.0	0.0
Maximum (plf)	1902	27.76

NCMA Connection Capacity





CONNECTION EVALUATION

Keystone Unit: Standard
Manufacturer: Mirafi
Geogrid Type: 7XT
Laboratory: TRI Texas 7/1/2003

Laboratory Test Data

Normal Load (plf)	Peak Connection (plf)	3/4" Connection (plf)
501	1627	1339
1003	2295	1549
1502	2481	2000
1503	2590	2060
1506	2697	2025
2002	2698	2140
2503	3037	2371

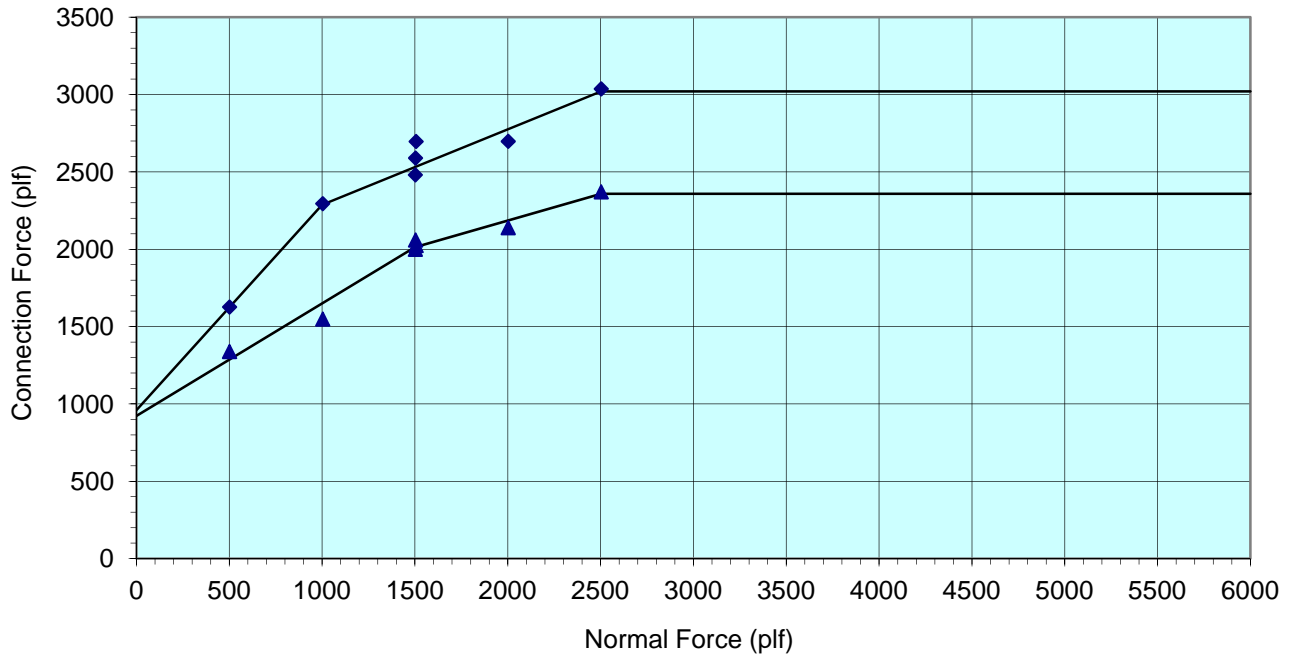
Peak Connection Equation Fit

	English	Metric
Intercept (plf)	960	14.01
Slope1	53.0	53.0
Break - Normal	1000	14.59
Slope2	26.0	26.0
Maximum (plf)	3020	44.08

3/4" Serviceability Equation Fit

Intercept (plf)	923	13.47
Slope1	36.0	36.0
Break - Normal	1500	21.89
Slope2	19.0	19.0
Maximum (plf)	2358	34.42

NCMA Connection Capacity





1/10/2012
cdm

CONNECTION EVALUATION

Keystone Unit: Standard
Manufacturer: Mirafi
Geogrid Type: 8XT
Laboratory: TRI Texas 5/23/2002

Peak Connection Equation Fit

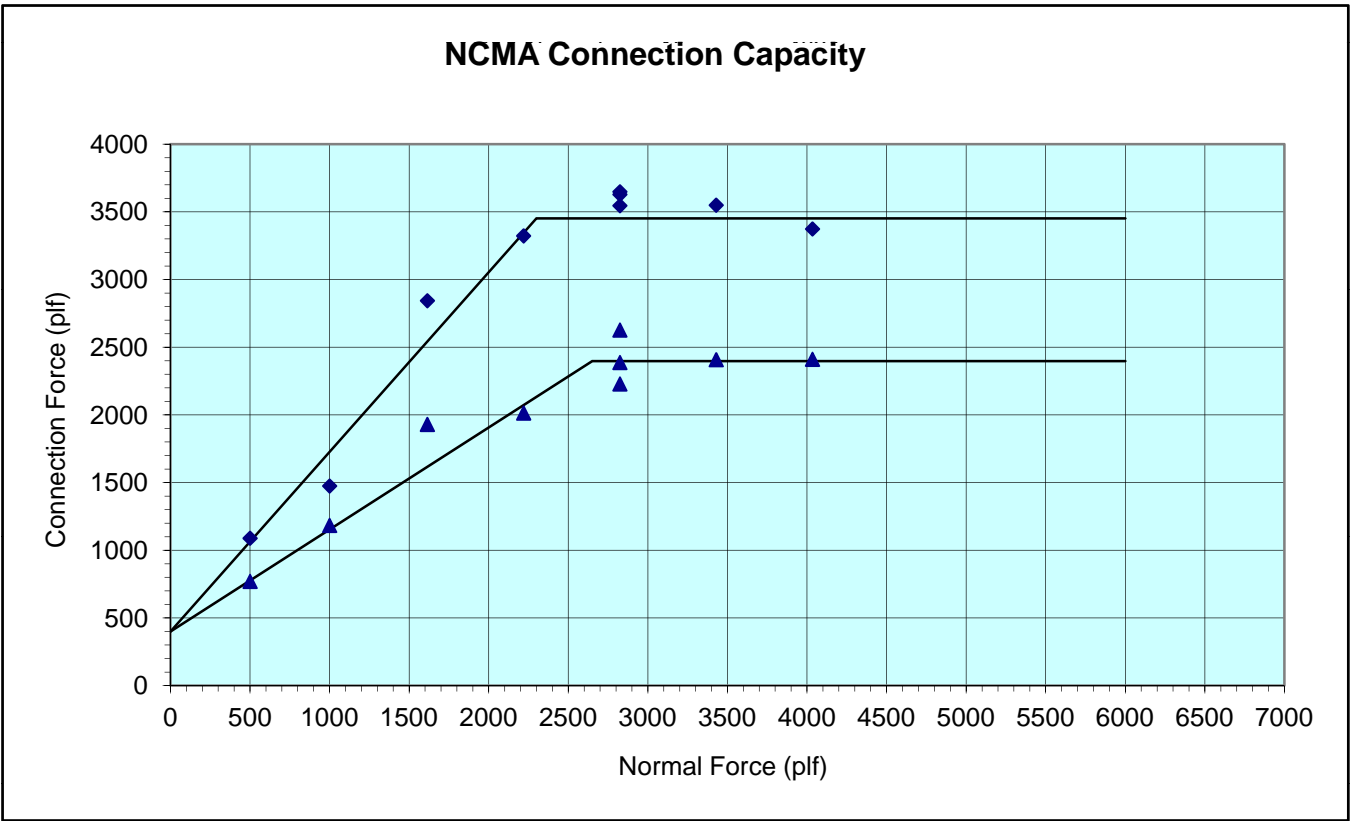
	English	Metric
Intercept (plf)	400	5.84
Slope1	53.0	53.0
Break - Normal	2300	33.57
Slope2	0.0	0.0
Maximum (plf)	3452	50.38

3/4" Serviceability Equation Fit

Intercept (plf)	400	5.84
Slope1	37.0	37.0
Break - Normal	2650	38.68
Slope2	0.0	0.0
Maximum (plf)	2397	34.98

Laboratory Test Data

Normal Load (plf)	Peak Connection (plf)	3/4" Connection (plf)
500	1089	770
1000	1475	1184
1614	2844	1930
2219	3323	2014
2824	3629	2627
2824	3546	2387
2824	3649	2229
3429	3550	2408
4034	3374	2411





CONNECTION EVALUATION

Keystone Unit: Standard
Manufacturer: Mirafi
Geogrid Type: 10XT
Laboratory: TRI Texas 7/1/2003

Peak Connection Equation Fit

	English	Metric
Intercept (plf)	1125	16.42
Slope1	43.0	43.0
Break - Normal	2950	43.05
Slope2	0.0	0.0
Maximum (plf)	3876	56.57

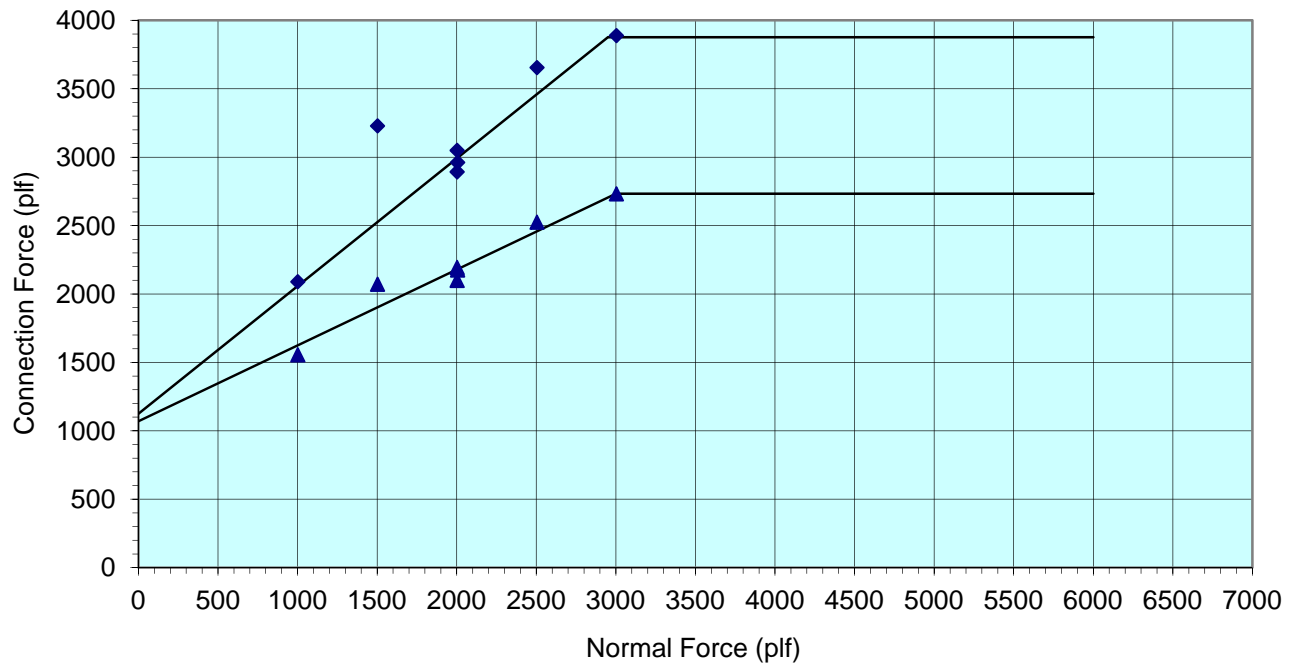
3/4" Serviceability Equation Fit

Intercept (plf)	1070	15.62
Slope1	29.0	29.0
Break - Normal	3000	43.78
Slope2	0.0	0.0
Maximum (plf)	2733	39.89

Laboratory Test Data

Normal Load (plf)	Peak Connection (plf)	3/4" Connection (plf)
1001	2090	1556
1502	3229	2072
2002	3050	2194
2002	2893	2100
2005	2962	2175
2504	3655	2525
3003	3889	2732

NCMA Connection Capacity





CONNECTION EVALUATION

Keystone Unit: Standard
Manufacturer: Mirafi
Geogrid Type: 20XT
Laboratory: Kingston, ONT

Laboratory Test Data

Normal Load (plf)	Peak Connection (plf)	3/4" Connection (plf)
1047	2123	1565
2030	3390	1995
3057	4014	2623
3065	3726	2798
3065	3780	2398
4077	4538	2724
5285	4770	3035
6507	4785	3435

Peak Connection Equation Fit

	English	Metric
Intercept (plf)	1350	19.70
Slope1	38.0	38.0
Break - Normal	4380	63.92
Slope2	0.0	0.0
Maximum (plf)	4772	69.65

3/4" Serviceability Equation Fit

	English	Metric
Intercept (plf)	1350	19.70
Slope1	18.0	18.0
Break - Normal	6507	94.97
Slope2	0.0	0.0
Maximum (plf)	3464	50.56

